

# R-004G

CRAPO ST  
New Bedford

Inspection Status: Surface Inspection  
Inspection Level: Level 2

	Quick	Index	Rating
Overall	311A	1.1	16
Structural	3115	1.3	8
O&M	1800	1	8

**Project:** | New Bedford 3D Regulator Inspections

**Owner:** New Bedford, MA

**Customer:** CDM Smith

## MANHOLE

**MH Use:** Sanitary

**Access Type:** Manhole

**Year Constructed:**

**Year Renewed:**

**Evidence of Surcharge:** No

## MEASUREMENTS

**Rim to Invert:** 6.9ft

**Rim to Grade:**

**Grade to Invert:** 6.9ft

**Rim to Grade Exposed:**

**Northing:**

**Easting:**

**Elevation:**

**Vertical Datum:**

**GPS Accuracy:**

**Additional Information:**

## COVER

**Type:** Vented

**Shape:** Circular

**Size:** 26"

**Size Width:**

**Center Cover Size:**

**Cover Material:** Cast Iron

**Hole Diameter:** <= 1/2 inch  
(10mm)

**Hole Number:** 0

**Bearing Surface Diameter:** 28"

**Bearing Surface Width:** 1"

**Cover/Frame Fit:** Good

**Cover Condition:** Sound

## COVER INSERT

**Insert Type:** None

**Insert Condition:**

## COVER ADJUSTMENT RING

**Ring Type:** Solid

**Ring Material:** Cast Iron

**Ring Condition:** Sound

**Ring Height:**

## FRAME

**Frame Material:** Cast Iron

**Bearing Surface Width:** 1"

**Bearing Surface Depth:** 9"

**Clear Opening Diameter:** 24"

**Clear Opening Width:** 24"

**Frame Depth:**

**Offset Distance:**

**Seal Condition:** Sound

**Seal Inflow:** None

**Frame Condition:** Sound



CHIMNEY

<b>Chimney Present:</b> Yes	<b>Chimney I/I:</b>	<b>Lining Interior:</b>
<b>Chimney Depth:</b> 1.4ft	<b>First Material:</b> Concrete (precast)	<b>Lining Exterior:</b>
<b>Clear Opening:</b>	<b>Second Material:</b>	<b>Chimney Condition:</b>

CONE

<b>Cone Depth:</b>	<b>First Material:</b>	<b>Lining Exterior:</b>
<b>Cone Type:</b> Not Present	<b>Second Material:</b>	<b>Cone Condition:</b>
<b>Clear Opening:</b>	<b>Lining Interior:</b>	

WALL

<b>Wall Diameter:</b>	<b>First Material:</b> Other	<b>Lining Exterior:</b>
<b>Wall Width:</b>	<b>Second Material:</b>	<b>Wall Condition:</b>
<b>Wall Depth:</b> 1.5ft	<b>Lining Interior:</b>	

BENCH

<b>Bench Present:</b> None	<b>Lining:</b>
<b>Material:</b>	<b>Bench Condition:</b>

CHANNEL

<b>Channel Present:</b> No	<b>Type:</b>	<b>Channel Condition:</b>
<b>Material:</b>	<b>Exposure:</b>	

STEP

<b>Number:</b> 0	<b>Material:</b>
------------------	------------------


PIPE CONNECTION INFORMATION

Pipe No.	Clock	Rim to Inv.	Direction	Material	Shape	Height	Width	Cond.	Seal Cond.	Pipe Type	Struct. ID	Comments
1	6	6.9"	In	Brick	Circular	57"		Sound	Sound	Gravity Connection		
2	12	6.9"	Out	Brick	Circular	57"		Sound	Sound	Gravity Connection		
3	9	4.1"	In	Polyvinyl Chloride	Circular	10"		Sound	Sound	Gravity Connection		
4	3	3.1"	In	Polyvinyl Chloride	Circular	10"		Sound	Sound	Gravity Connection		

GENERAL INFORMATION

<b>Surveyed By:</b>	<b>Reviewer Number:</b> P0035145122021	<b>Sheet No.:</b>
<b>Reviewed By:</b> M. Bierman	<b>Precleaning:</b> No Pre-Cleaning	<b>Date Cleaned:</b>
<b>Weather:</b> Dry - No precipitation during survey	<b>PO Number:</b>	<b>Work Order:</b>
<b>Purpose of Survey:</b> Routine assessment	<b>Media Label:</b>	<b>Consequence of Failure:</b>
<b>Certificate Number:</b> U0219070304856	<b>Date &amp; Time</b> 2023-12-14	

# Condition Report

Graph	Position	Code	Observation	Video (sec)	Grade
	0ft	MGO	Miscellaneous General Observation	4.93	S 0
	0.4ft	IS	Infiltration Stain	5.73	M 1
	1.2ft	OBB	Obstruction Brick or Masonry	7.33	S 0
	1.6ft	IS	Infiltration Stain	8.13	M 1
	2.2ft	CM	Crack Multiple	9.33	S 3
	5.5ft	MGO	Miscellaneous General Observation	15.93	S 0





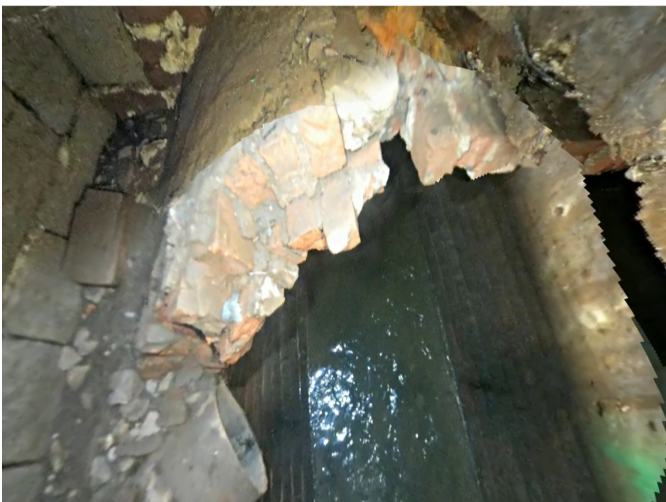
Code: **MGO**  
Description: **Miscellaneous General Observation**

Distance: **0ft**  
Structural Grade: **0**  
O&M Grade: **0**  
Clock Start/From:  
Clock To:  
1st Value:  
2nd Value:  
Value Percent:  
Continuous Index:  
Within Eight" of Joint: **False**  
Remarks: **Start inspection**



Code: **IS**  
Description: **Infiltration Stain**

Distance: **0ft**  
Structural Grade: **0**  
O&M Grade: **1**  
Clock Start/From: **12**  
Clock To: **12**  
1st Value:  
2nd Value:  
Value Percent:  
Continuous Index: **S01**  
Within Eight" of Joint: **False**  
Remarks:



Code: **OBB**  
Description: **Obstruction Brick or Masonry**

Distance: **1ft**  
Structural Grade: **0**  
O&M Grade: **0**  
Clock Start/From: **12**  
Clock To: **12**  
1st Value:  
2nd Value:  
Value Percent: **75**  
Continuous Index:  
Within Eight" of Joint: **False**  
Remarks: **Pipe wall in manhole**





Code: **IS**  
Description: **Infiltration Stain**

Distance: **1ft**  
Structural Grade: **0**  
O&M Grade: **1**  
Clock Start/From: **12**  
Clock To: **12**  
1st Value:  
2nd Value:  
Value Percent:  
Continuous Index: **F01**  
Within Eight" of Joint: **False**  
Remarks:



Code: **CM**  
Description: **Crack Multiple**

Distance: **2ft**  
Structural Grade: **3**  
O&M Grade: **0**  
Clock Start/From: **12**  
Clock To: **12**  
1st Value:  
2nd Value:  
Value Percent:  
Continuous Index:  
Within Eight" of Joint: **False**  
Remarks: **Top of chamber**



Code: **MGO**  
Description: **Miscellaneous General Observation**

Distance: **5ft**  
Structural Grade: **0**  
O&M Grade: **0**  
Clock Start/From:  
Clock To:  
1st Value:  
2nd Value:  
Value Percent:  
Continuous Index:  
Within Eight" of Joint: **False**  
Remarks: **End inspection**