

MA-NEB-TLM-21-604.dwg

G:\OBS22\02\200359\PROJECTS\ASSIGNMENTS\NEW\_BEDFORD-1-WELBY\_RD\DWG\

TABLE OF CONTENTS

SHEET #	TITLE
604-01	COVER SHEET
604-02	NOTES AND BILL OF MATERIALS
604-03	LEGEND AND BOLLARD DETAIL
604-04	LOCATION PLAN
604-05	INSTALLATION PLAN
604-51	ENCLOSURE DETAILS
604-52	PANEL LAYOUT/BILL OF MATERIALS
604-53	TERMINAL BLOCK DETAIL
604-54	120V AC POWER DISTRIBUTION
604-55	120V AC POWER DISTRIBUTION
604-56	24V DC POWER DISTRIBUTION
604-57	GROUNDING DETAIL & CONDUIT SCHEDULE
604-58	RTU1 LOOP DETAIL
604-59	NETWORK DETAIL



WORK SCOPE

MAIN

INSTALLATION: SINGLE CABINET TELEMETRY  
AFFECTED STREETS: WELBY ROAD



FIELD VERIFY DIMENSIONS  
PRIOR TO PIPE FABRICATION

1 WELBY ROAD, NEW BEDFORD, MA  
WORK ORDER #G210322Y

ISSUED FOR  
CONSTRUCTION

0	ISSUED FOR CONSTRUCTION	08/14/22	AG/ES
No.	Description	Date	Dw/Ck
Revision/Status			
EVERSOURCE ENERGY			
1 WELBY ROAD, NEW BEDFORD, MA			
WORK ORDER #G210322Y			
COVER SHEET			
SCALE: 1" = 100'		SHEET 01 OF 14	
Drawn by / Date	Checked by / Date	Drawing Number	Rev. No.
AJG 08/01/22	EJS 08/14/22	MA-NEB-TLM-21-604-01	0



MA-NEB-TLM-21-604.dwg

G:\OBS22\02\200359\PROJECTS\ASSIGNMENTS\NEW\_BEDFORD-1-WELBY\_RD\DWG\

- GENERAL NOTES:
- IF ANY OF THE FOLLOWING OCCUR A DRAWING REVISION IS REQUIRED AND MUST BE APPROVED AND/OR STAMPED BY THE ENGINEER OF RECORD. CHANGES CAN BE APPROVED AND/OR STAMPED BY A PROJECT ENGINEER, BUT THE ENGINEER OF RECORD MUST BE INFORMED.
    - IF THE TIE IN POINT MOVES TO A DIFFERENT SEGMENT OF PIPE THAN SHOWN.
    - IF A CHANGE IN THE LOCATION OF VALVES IS REQUIRED.
    - IF THERE IS ANY CHANGE TO WHAT IS SHOWN ON THE DRAWING WITHIN 50 FT OF A PRESSURE REGULATING STATION, DISTRICT REGULATOR, OR GATE STATION.
    - IF A CHANGE IN PIPE SIZE, MATERIAL, OR WALL THICKNESS IS REQUIRED.
    - ALTERNATE FITTINGS THAT ARE ACCEPTABLE FOR ANY TIE-IN DETAIL WILL BE CALLED OUT IN THE DRAWING. FITTING CHANGES NOT SHOWN AS ALTERNATIVES ON THE DRAWING WILL NEED TO FOLLOW THE DRAWING CHANGE PROCESS CONTAINED IN SECTION V.D.
  - CONSTRUCTION DRAWINGS, LOCATIONS OF EXISTING UTILITIES, UNDERGROUND STRUCTURES AND WORK LOCATIONS ARE BASED ON BEST AVAILABLE INFORMATION BUT HAVE NOT BEEN FIELD VERIFIED.
  - ALL WORK, MATERIAL AND CONSTRUCTION SHALL BE PERFORMED AND COMPLETED IN COMPLIANCE WITH ALL PERMITS AND APPROVALS PER EVERSOURCE, LOCAL, STATE, OSHA AND FEDERAL REGULATIONS AND STANDARDS.
  - ALL LIVE GAS WORK EXCEPT SERVICE SIZE TAPS, INCLUDING BUT NOT LIMITED TO TAPPING OF FITTINGS ON LIVE MAINS, STOPPING, MANIPULATING VALVE, ABANDONMENT, SHALL BE PERFORMED BY, OR AT THE DIRECTION AND UNDER THE DIRECT SUPERVISION OF EVERSOURCE GAS PERSONNEL AND IN ACCORDANCE WITH THE WRITTEN PROCEDURE. DRAWING CHANGES MAY ALSO REQUIRE A CHANGE TO THE PROCEDURE.
  - EXCAVATOR IS REQUIRED TO PROTECT EXISTING UTILITIES, STRUCTURES, LANDSCAPES FEATURES, SIGNAGE, CURBS, ETC. CARE SHOULD BE TAKEN NOT TO DISTURB OR DAMAGE SUCH ITEMS. ROADWAY, SIDEWALKS, AND GRASS DISTURBED SHALL BE RESTORED TO THE SATISFACTION OF THE CITY OR TOWN. PLANT BEDS WILL BE RELOCATED TO THEIR EXISTING REGULAR LOCATION.
  - ALL TRAFFIC CONTROL SHALL CONFORM TO THE LATEST EDITION OF THE MANUAL OF UNIFORM TRAFFIC CONTROL DEVICES (MUTCD), INCLUDING ALL REVISIONS AND ADDENDA. ALL TRAFFIC CONTROL DEVICES WILL BE SUPPLIED BY EXCAVATOR.

BILL OF MATERIAL				
ITEM	SIZE	DESCRIPTION	QTY	UNIT
1	1-1/4"	RMC CONDUIT, GALVANIZED, PVC COATED	40	FT
2	1-1/4"	RMC ELBOW, 90 DEG, 24" RADIUS, GALVANIZED, PVC COATED	2	EA
3	4"X3/4"	TAPPING TEE, ELECTROFUSION, IPS X CTS, HDPE 3408/4710, SDR 11, ASTM D2513, ASTM D3350, ASTM D3261 ASTM F1055. CENTRAL PLASTICS OR APPROVED EQUAL.	2	EA
4	3/4"	VALVE,BALL, FULL PORT, SERVICE, 3/4 IN CTS, 0.090 WALL, SDR 9.7, PE 4710, POLYETHYLENE, BUTT FUSE, BLACK FINISH	1	EA
5	3/4"	PIPE, 3/4 IN CTS X 0.090 IN THK WALL SDR 9.7, 7/8 IN OD, 500 FT LG COIL, POLYETHYLENE, PE3408/PE100	40	FT
6	3/4"	RISER, SERVICE, STRAIGHT, 3/4 IN CTS X 0.090 IN THK WALL SDR 9.7	1	EA
7	3/4"	VALVE, SERVICE, 3/4 IN, THREADED ENDS, LOCK-WING TAMPER PROOF, BLACK FINISH	1	EA
8	3/4"	COUPLING, METFIT, 3/4 IN CTS, 0.090 IN THK WALL SDR 9.7, PLASTIC, PE-4710	3	EA
9	4 1/4" square	BOX VALVE, CURB, W/ 4-1/4 IN SQ COVER NON-LOCKING LID, FOR 1/2 , 3/4, 1 , 1-1/4 , CURB VALVES, PAVEMENT RISER RING IN 583489, 48/SKID	1	EA

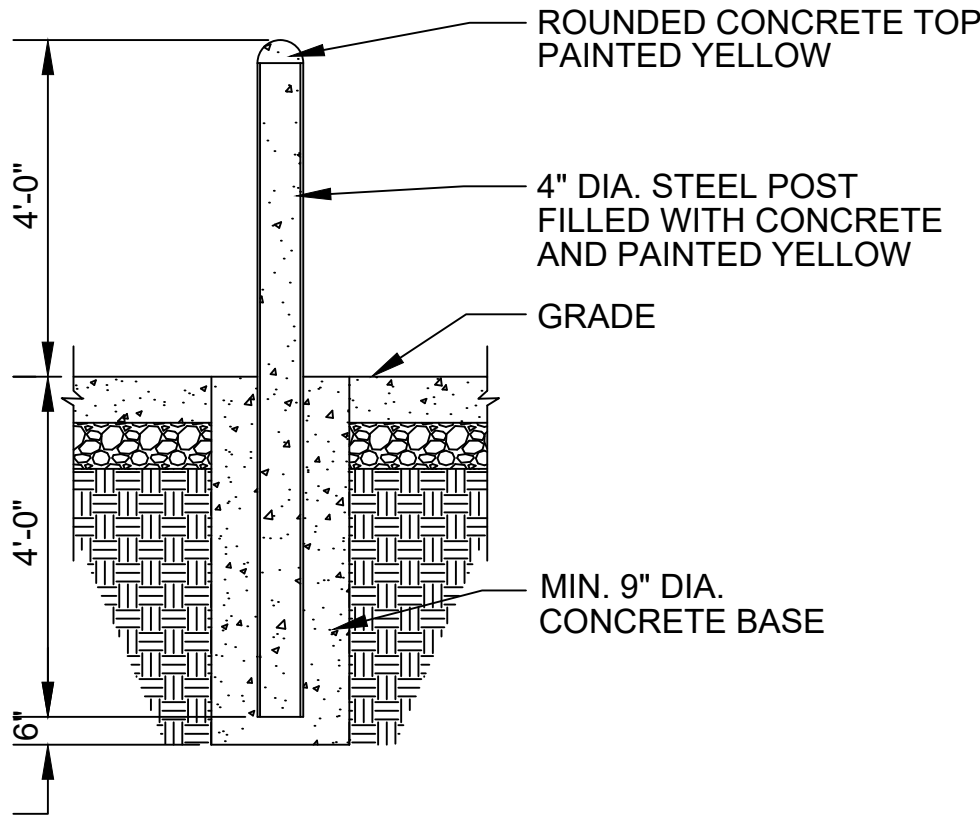
- \* NOTE:
- ADDITIONAL ELBOWS MAY BE REQUIRED FOR OFFSETS IN THE FIELD
  - ALL MATERIALS SHALL BE INSTALLED IN COMPLIANCE WITH THE MANUFACTURER'S INSTALLATION INSTRUCTIONS.

ISSUED FOR  
CONSTRUCTION

0	ISSUED FOR CONSTRUCTION	08/14/22	AG/ES
No.	Description	Date	Dw/Ck
Revision/Status			
EVERSOURCE ENERGY			
1 WELBY ROAD, NEW BEDFORD, MA			
WORK ORDER #G210322Y			
NOTES AND BILL OF MATERIAL			
SCALE: NOT TO SCALE		SHEET 02 OF 14	
Drawn by / Date		Checked by / Date	Drawing Number
AJG 08/01/22		EJS 08/14/22	MA-NEB-TLM-21-604-02
			0

FIELD VERIFY DIMENSIONS  
PRIOR TO PIPE FABRICATION





PROTECTIVE POST (BOLLARD) DETAIL  
SCALE: NTS

DRAWING LEGEND			
	MANHOLE		REGULATING STATION 50' BOUNDARY
	UTILITY POLE		EXISTING GAS MAIN
	CATCH BASIN		PROPOSED GAS MAIN
	HYDRANT		GAS MAIN TO BE ABANDONED
	INSIDE METER		GAS MAIN WITH SERVICE TRANSFERS
	OUTSIDE METER		GAS MAIN WITH PRESSURE INCREASE
	LIGHT POLE		RIGHT-OF-WAY
	ELECTRIC MANHOLE		ELECTRIC
	TELEPHONE MANHOLE		WATER LINE
	VALVE		SEWER LINE
	SERVICE TEE		TELEPHONE
			DRAIN LINE
			FENCE LINE

ISSUED FOR  
CONSTRUCTION

0	ISSUED FOR CONSTRUCTION	08/14/22	AG/ES
No.	Description	Date	Dw/Ck
Revision/Status			
<b>EVERSOURCE</b> ENERGY			
1 WELBY ROAD, NEW BEDFORD, MA			
WORK ORDER #G210322Y			
LEGEND AND BOLLARD DETAIL			
SCALE: NOT TO SCALE		SHEET 03 OF 14	
Drawn by / Date	Checked by / Date	Drawing Number	Rev. No.
AJG 08/01/22	EJS 08/14/22	MA-NEB-TLM-21-604-03	0



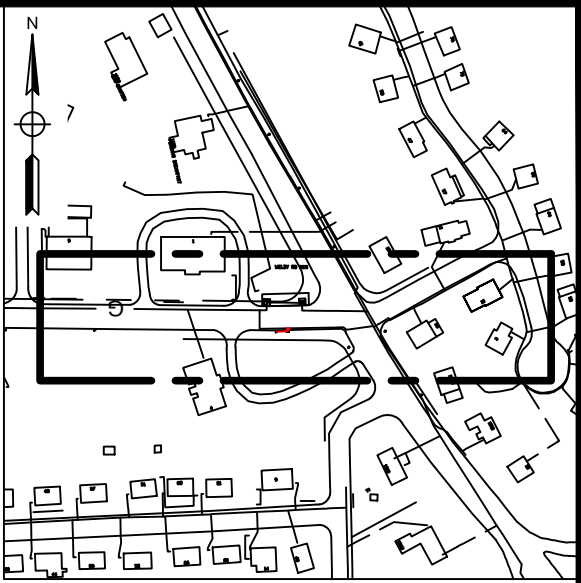
FIELD VERIFY DIMENSIONS  
PRIOR TO PIPE FABRICATION

MA-NEB-TLM-21-604.dwg

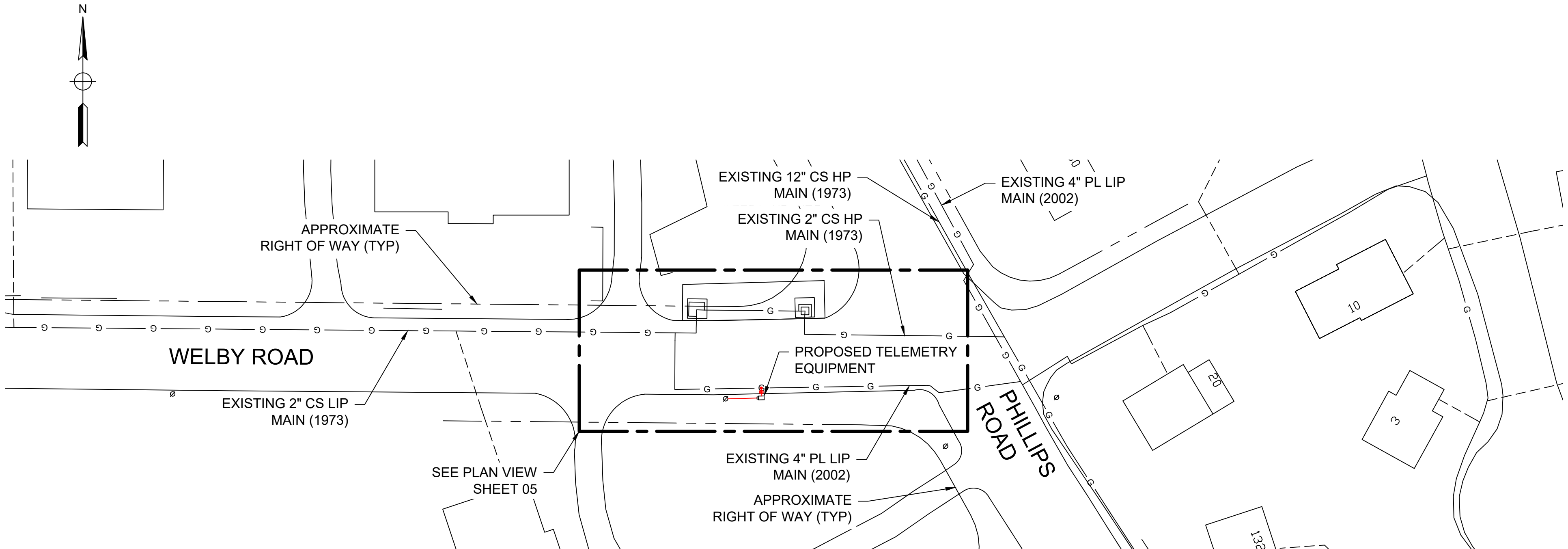
G:\OBS22\02200359\PROJECTS\ASSIGNMENTS\NEW\_BEDFORD-1-WELBY\_RD\DWG\

MA-NEB-TLM-21-604.dwg

G:\OBS22\02200359\PROJECTS\ASSIGNMENTS\NEW\_BEDFORD-1-WELBY\_RD\DWG\



KEY MAP  
SCALE: N.T.S.



LOCATION PLAN  
SCALE: 1" = 40'

ISSUED FOR  
CONSTRUCTION

0	ISSUED FOR CONSTRUCTION	08/14/22	AG/ES
No.	Description	Date	Dw/Ck
Revision/Status			
EVERSOURCE ENERGY			
1 WELBY ROAD, NEW BEDFORD, MA			
WORK ORDER #G210322Y			
LOCATION PLAN			
SCALE: AS NOTED		SHEET 04 OF 14	
Drawn by / Date		Checked by / Date	
A.J.G 08/01/22		E.J.S 08/14/22	
Drawing Number		Rev. No.	
MA-NEB-TLM-21-604-04		0	

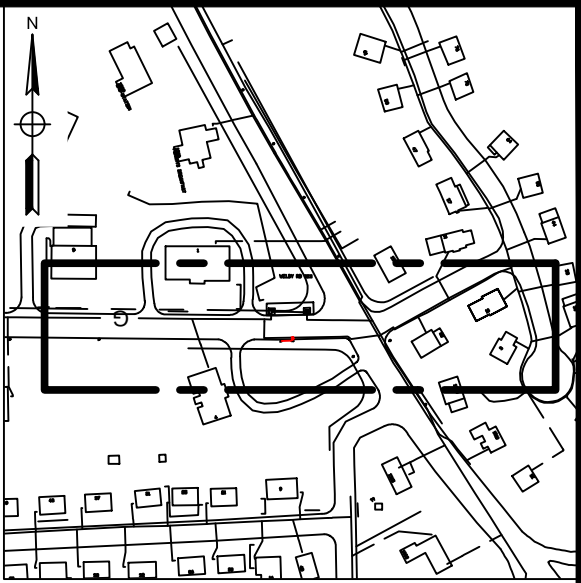


FIELD VERIFY DIMENSIONS  
PRIOR TO PIPE FABRICATION

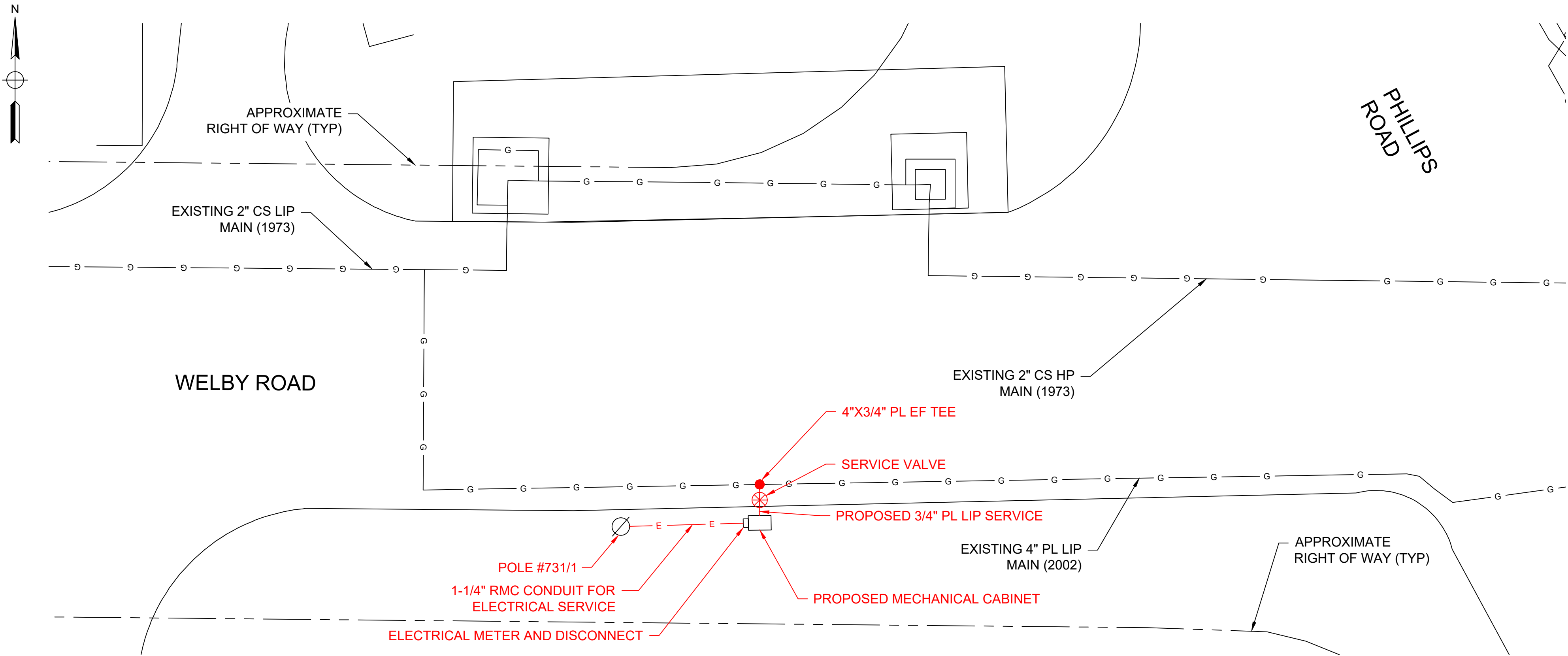


MA-NEB-TLM-21-604.dwg

G:\OBS22\02\200359\PROJECTS\ASSIGNMENTS\NEW\_BEDFORD-1-WELBY\_RD\DWG\



KEY MAP  
SCALE: N.T.S.



INSTALLATION PLAN  
SCALE: 1" = 10'

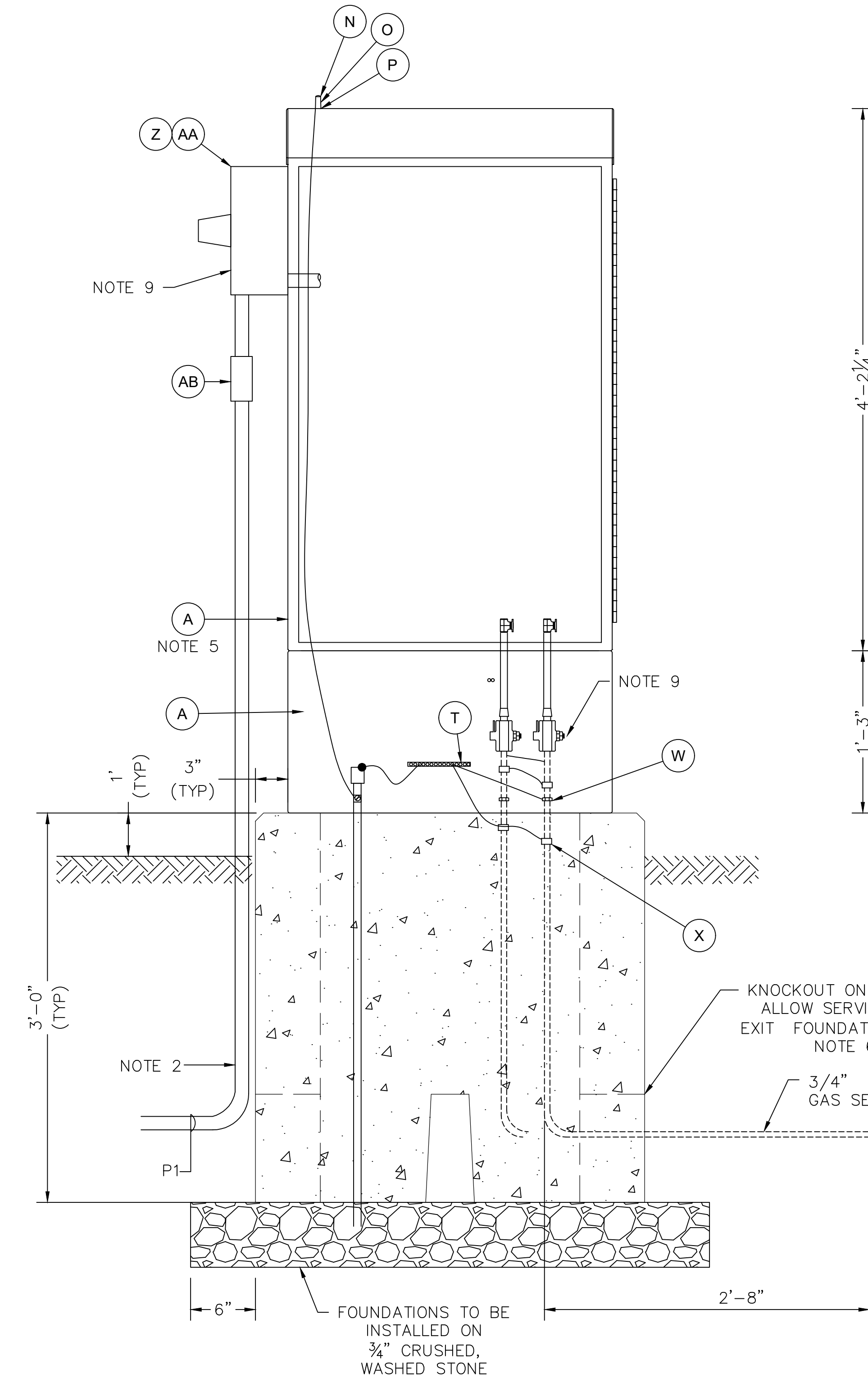
# ISSUED FOR CONSTRUCTION

0	ISSUED FOR CONSTRUCTION	08/14/22	AG/ES
No.	Description	Date	Dw/Ck
Revision/Status			
EVERSOURCE ENERGY			
1 WELBY ROAD, NEW BEDFORD, MA			
WORK ORDER #G210322Y			
INSTALLATION PLAN			
SCALE: AS NOTED		SHEET 05 OF 14	
Drawn by / Date	Checked by / Date	Drawing Number	Rev. No.
AJG 08/01/22	EJS 08/14/22	MA-NEB-TLM-21-604-05	0

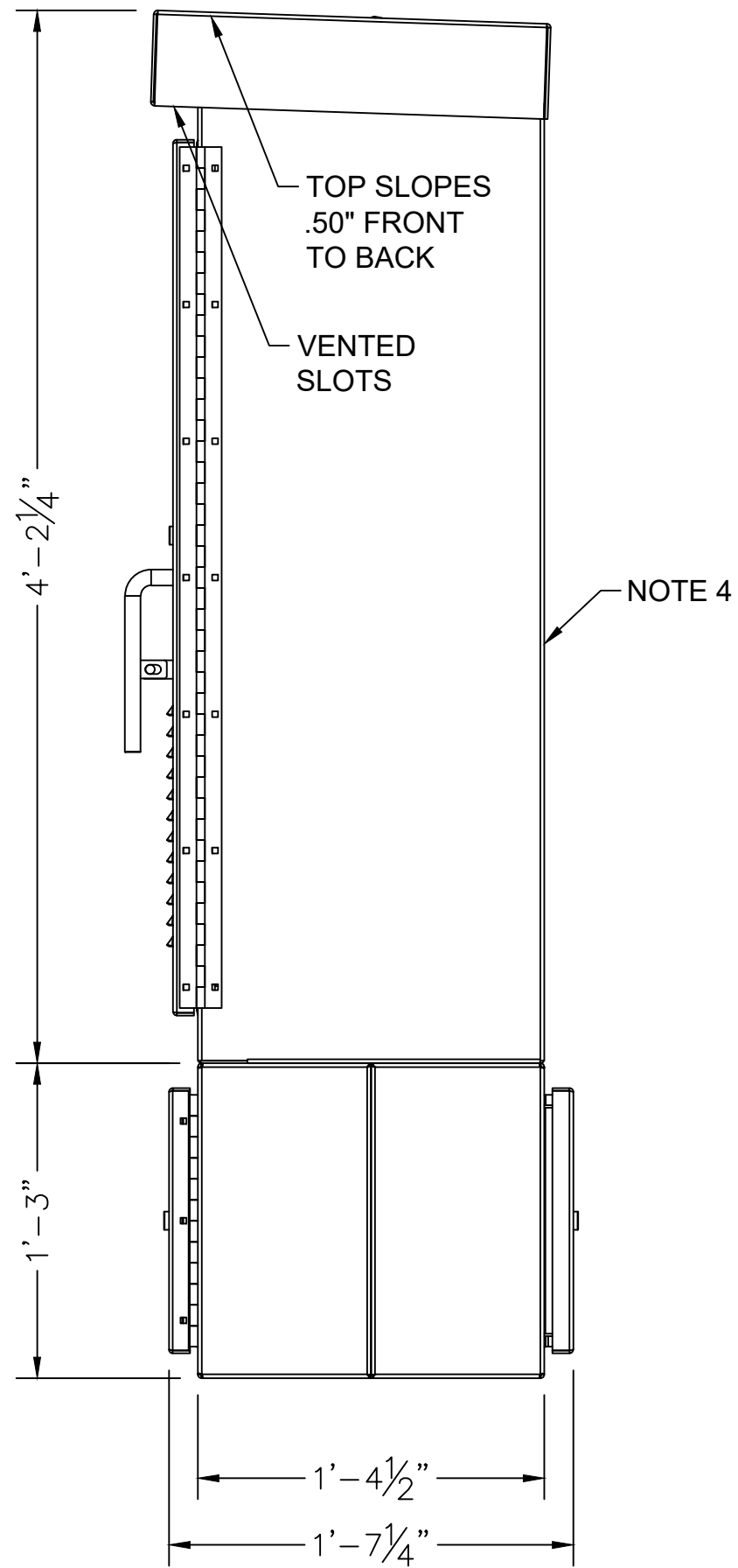


FIELD VERIFY DIMENSIONS  
PRIOR TO PIPE FABRICATION

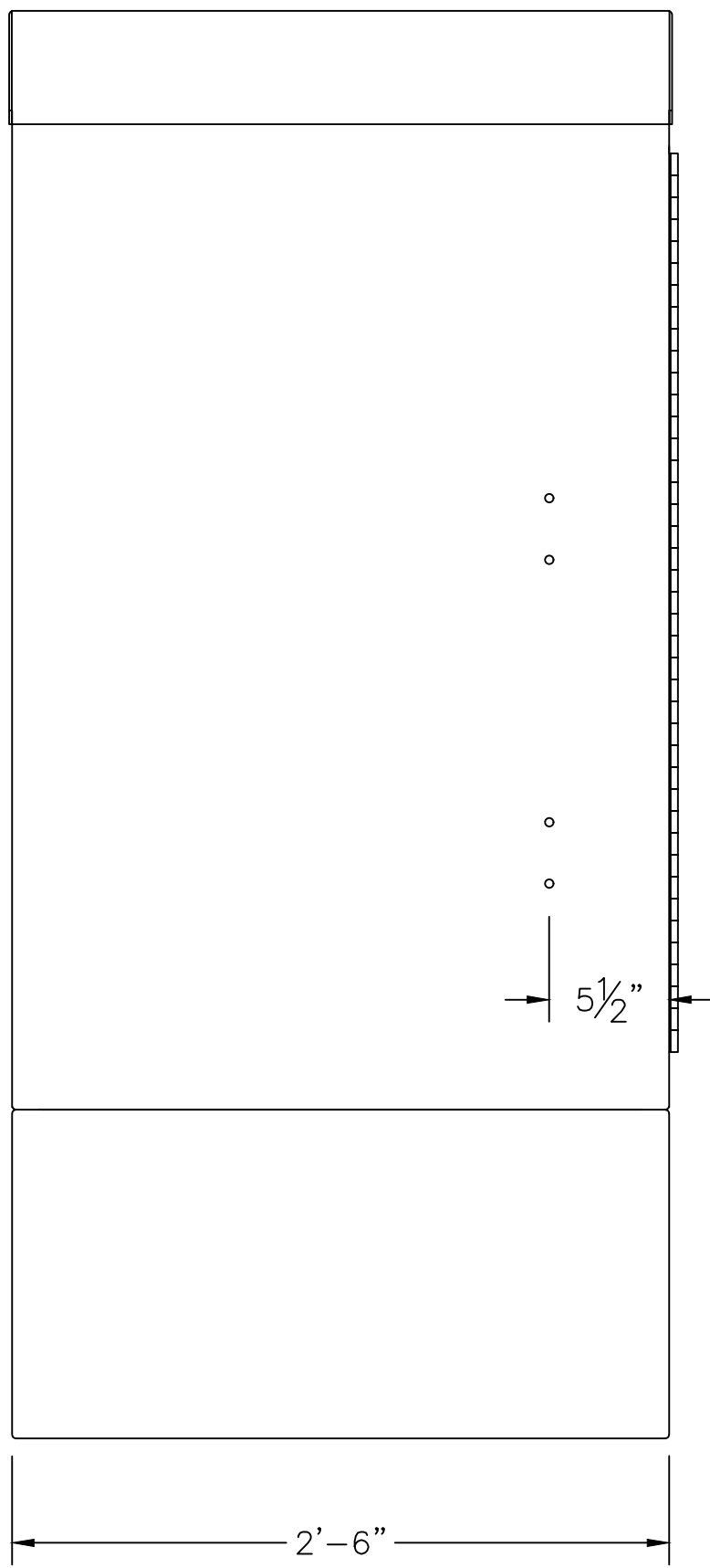
G:\JOBS\22\022200359\PROJECTS\ASSIGNMENTS\NEW\_BEDFORD-1\WELBY\_RD\DWG1



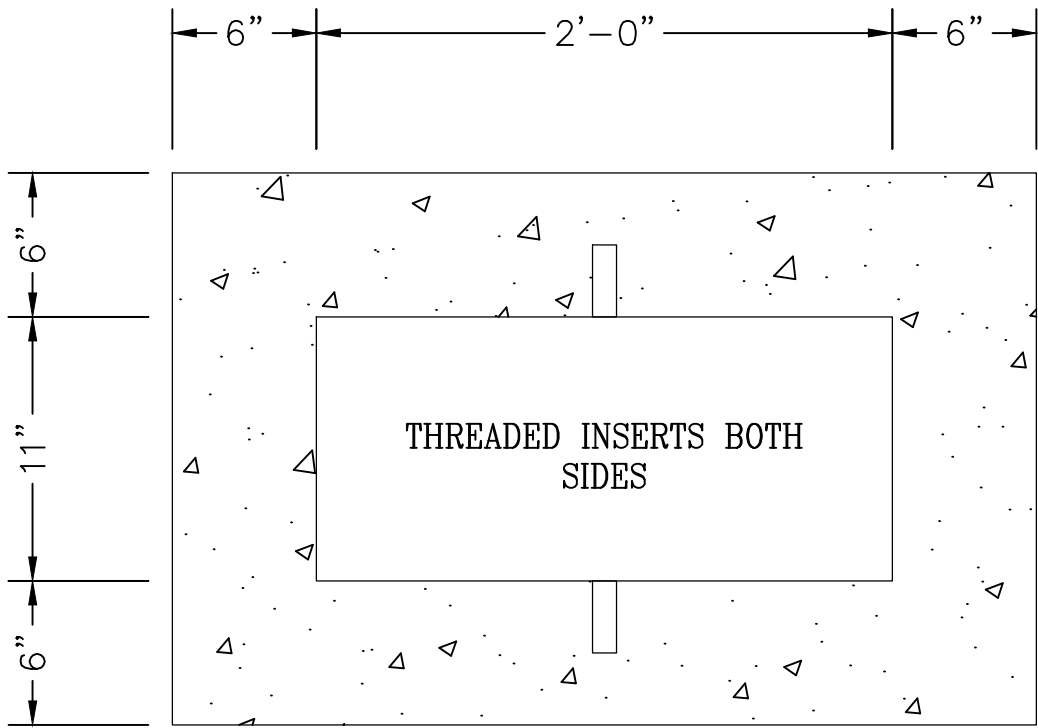
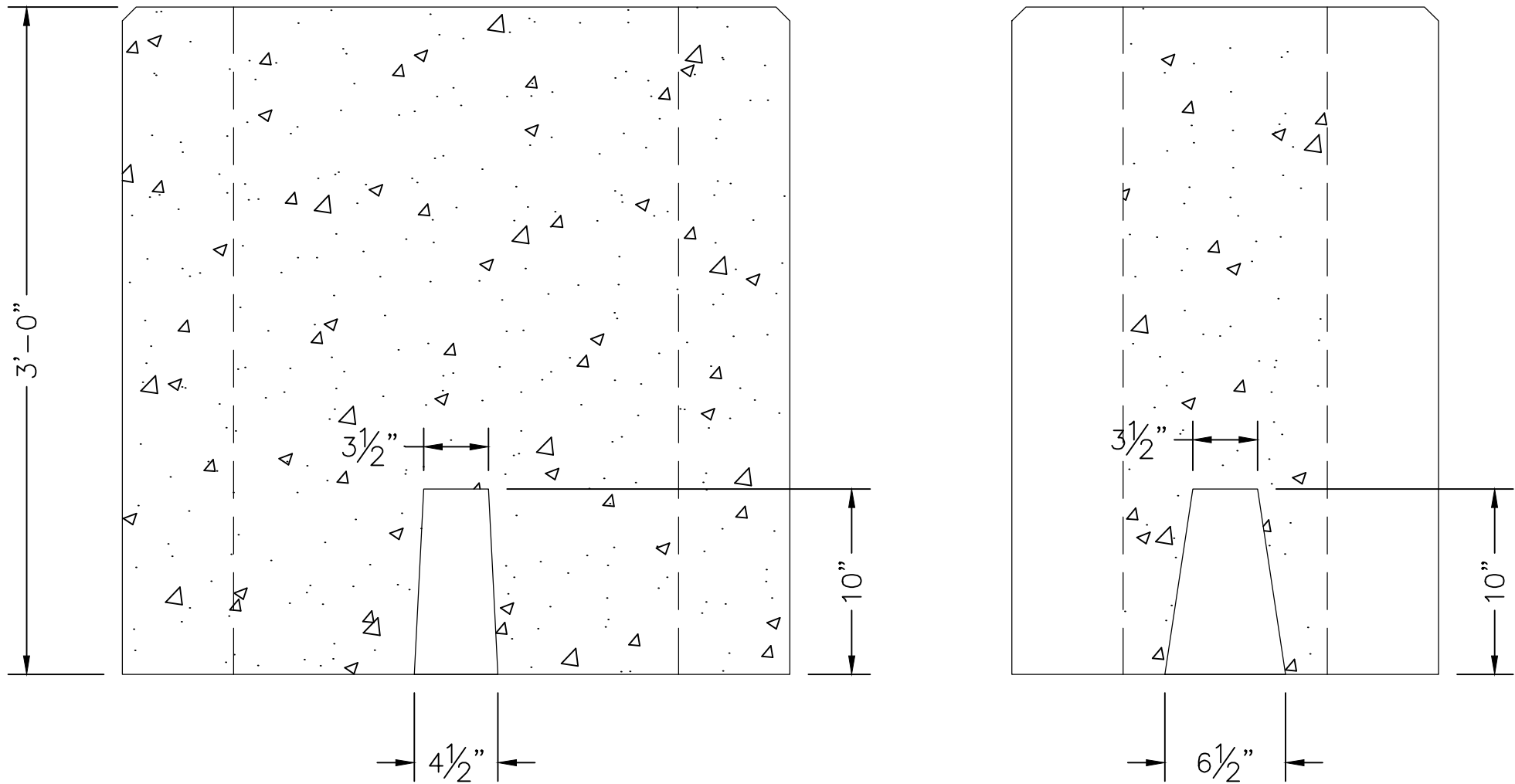
ENCLOSURE ELEVATION VIEW



RIGHT OUTSIDE VIEW

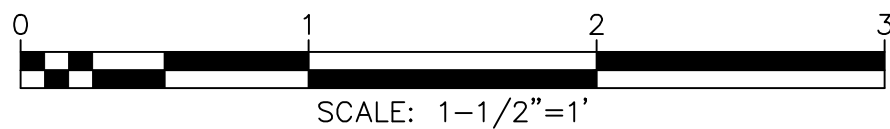


FRONT INSIDE CUT-OUT DETAIL



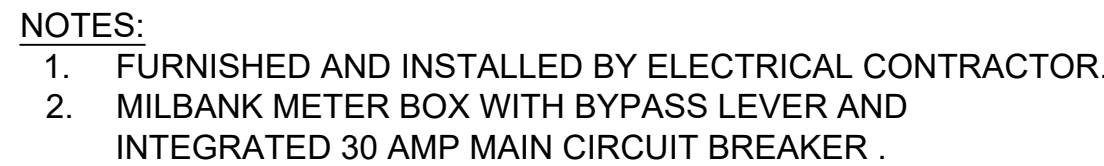
NOTES:


- EFV TO BE INSTALLED PER MANUFACTURERS REQUIREMENTS. EFV SHALL BE PROPERLY SIZED FOR APPLICATION PER EVERSOURCE STANDARDS AND MANUFACTURERS REQUIREMENTS.
- SERVICE CONNECTION TO CABINET SHALL BE IN ACCORDANCE WITH NFPA 70, THE REQUIREMENT OF THE LOCAL UTILITY AND THE AUTHORITY HAVING JURISDICTION (AHJ). IF A METER IS REQUIRED, IT SHALL BE LOCATED EXTERNAL TO THE CABINET .
- AN EFV WILL BE INSTALLED ON EACH GAS LINE TO A TRANSMITTER.
- EQUIPMENT SHALL BE MOUNTED NEAT AND PLUMB.
- INSTALL STANDOFFS TO THE BACK PLANE OF EACH CABINET.
- ALL BELOW GRADE OPENINGS IN POLL BOX SHALL BE PARGED WITH CONCRETE.
- MARK CONDUIT AT 18" INTERVALS WITH 1 BAND BLUE SCOTCH 35 MARKING TAPE.
- METER TROUGH & CIRCUIT BREAKER SHALL BE BY ELECTRICAL CONTRACTOR, METER BY UTILITY.
- MOUNT AS LOW AS POSSIBLE IN LOWER CABINET (ALL EYS CONNECTORS)



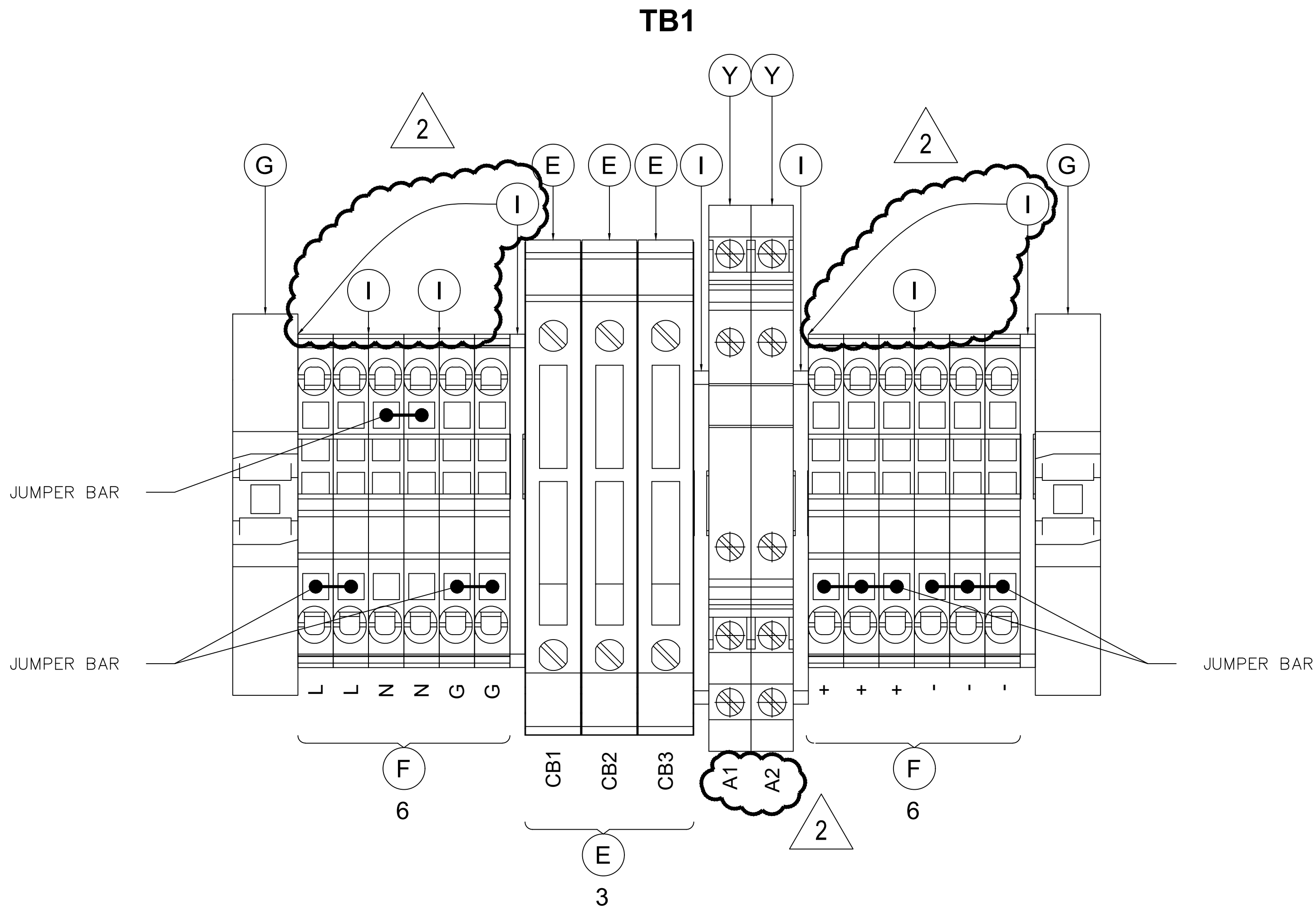
FIELD VERIFY  
DIMENSIONS  
PRIOR TO PIPE  
FABRICATION

2	REVISED NOTES AND ELEVATION VIEW	02/08/22	WBH/TAN
1	REMOVED DETAILS ADDED NOTE	08/05/21	WBH/TAN
0	AS-BUILT	04/09/21	DBF/MPL/EJP
No.	Description	Date	Dw/Ck/Ap
Revision/Status			
<b>EVERSOURCE</b> ENERGY			
AS-BUILT END POINT TELEMETER CABINET			
FOR POWER DROP, CELLULAR COMMUNICATION			
ENCLOSURE DETAILS			
SCALE: 1-1/2" = 1'		SHEET 6 OF 14	
Drawn by / Date DBF / 04/09/21	Checked by / Date MPL / 04/09/21	Sheet Number	Rev. No.
Approved by / Date EJP / 04/09/21	Filed: D-190-92.04.dwg	MA-NEB-TLM-21-604-51	2



3	REVISED BOM AND DIMENSIONS	04/11/22	WBH/TAN
2	REVISED BOM, DETAIL AND ADDED NOTES	02/08/22	WBH/TAN
1	REVISED BILL OF MATERIALS	08/06/21	WBH/TAN
0	AS-BUILT	04/09/21	DBF/MPL/EJP
No.	Description	Date	Dw/Ck/Ap
Revision/Status			
<div style="text-align: center;">  </div>			
AS-BUILT END POINT TELEMETER CABINET			
FOR POWER DROP, CELLULAR COMMUNICATION			
PANEL LAYOUT/BILL OF MATERIALS			
SCALE: 3" = 1'		SHEET 7 OF 14	
Drawn by / Date DBF / 04/09/21	Checked by / Date MPL / 04/09/21	Sheet Number	Rev. No.
Approved by / Date EJP / 04/09/21	Filed: D-190-92.04.dwg	MA-NEB-TLM-21-604-52	3

G:\JOBS\22\02200859\PROJECTS\ASSIGNMENTS\NEW\_BEDFORD-1\WELBY\_RD\DWG1

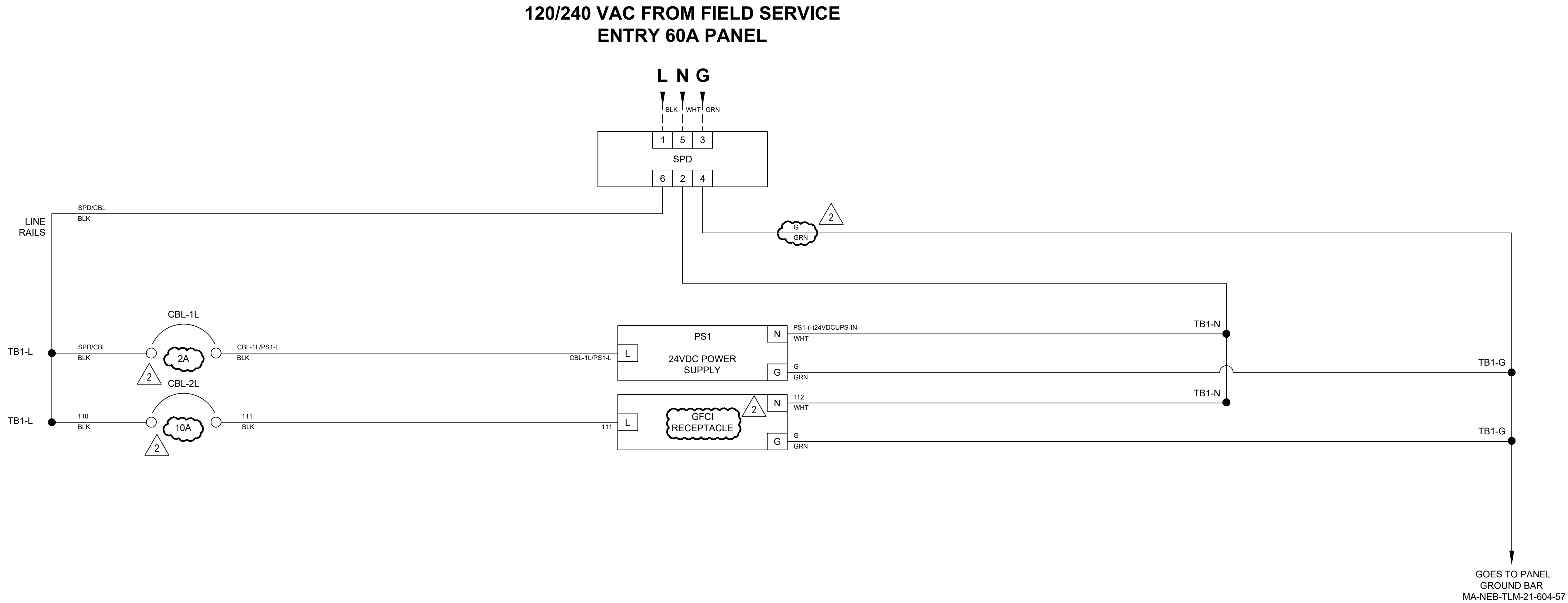


2	ADDED TEXT AND LEADERS	04/04/2022	WBH/TAN
1	ADDED ANALOG SURGE PROTECTORS	08/06/2021	WBH/TAN
0	AS-BUILT	04/09/21	DBF/MPL/EJP
No.	Description	Date	Dw/Ck/Ap
Revision/Status			
<b>EVERSOURCE</b> ENERGY			
AS-BUILT END POINT TELEMETER CABINET FOR POWER DROP, CELLULAR COMMUNICATION			
TERMINAL BLOCK DETAIL			
SCALE: 6" = 1'		SHEET 8 OF 14	
Drawn by / Date DBF / 04/09/21	Checked by / Date MPL / 04/09/21	Sheet Number	Rev. No.
Approved by / Date EJP / 04/09/21	Filed: D-190-92.04.dwg	MA-NEB-TLM-21-604-53	2

FIELD VERIFY  
DIMENSIONS  
PRIOR TO PIPE  
FABRICATION



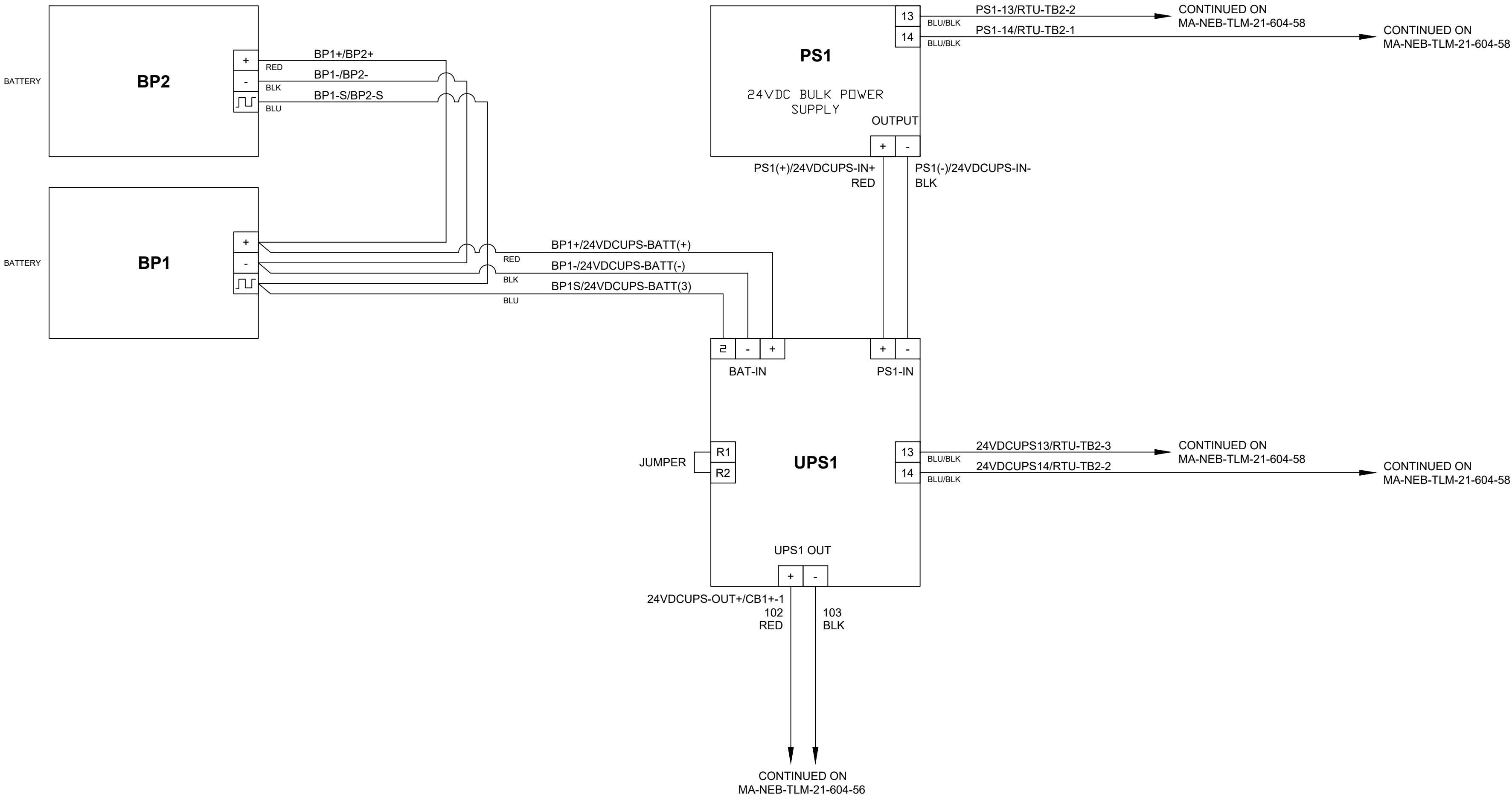
G:\JOBS\22\02200659\PROJECTS\ASSIGNMENTS\NEW\_BEDFORD-1\WELBY\_RD\DWG\



2	ADDED AND REVISED TEXT	04/04/2022	WBH/TAN
1	REVISED CB TEXT	08/06/2021	WBH/TAN
0	AS-BUILT	04/09/21	DBF/MPL/EJP
No.	Description	Date	Dw/Ck/Ap
Revision/Status			
EVERSOURCE ENERGY			
AS-BUILT END POINT TELEMETER CABINET			
FOR POWER DROP, CELLULAR COMMUNICATION			
120V AC POWER DISTRIBUTION			
SCALE: NTS		SHEET 9 OF 14	
Drawn by / Date	Checked by / Date	Sheet Number	Rev. No.
DBF / 04/09/21	MPL / 04/09/21	MA-NEB-TLM-21-604-54	2
Approved by / Date	Filed: D-190-92.04.dwg		
EJP / 04/09/21			

FIELD VERIFY  
DIMENSIONS  
PRIOR TO PIPE  
FABRICATION

G:\JOBS\221022200859\PROJECTS\ASSIGNMENTS\NEW\_BEDFORD-1\WELBY\_RD\DWG1

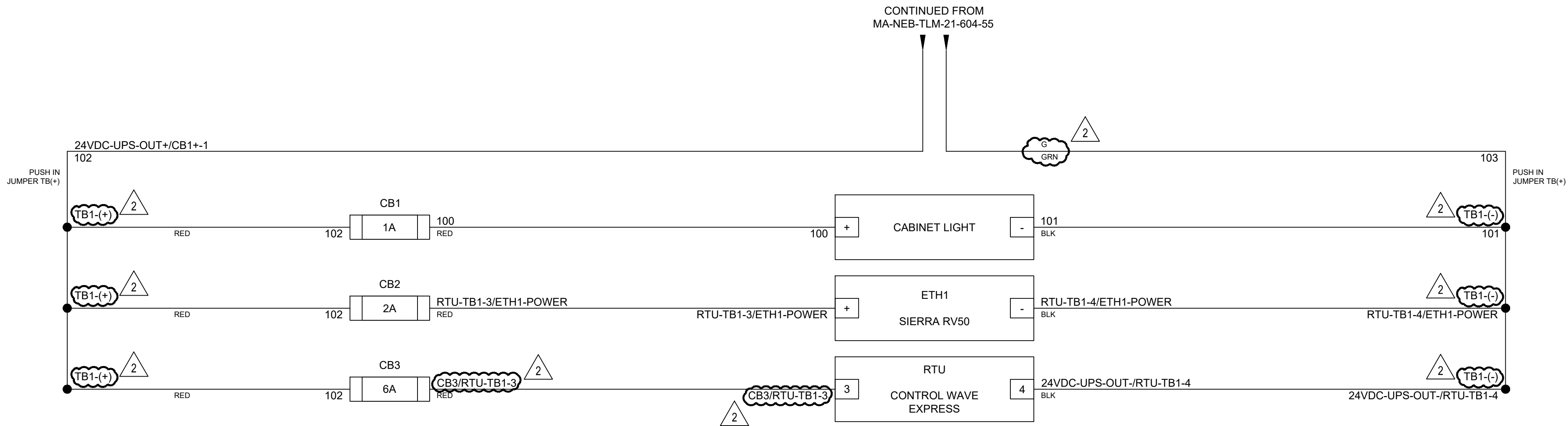


2	REVISED TEXT	12/09/21	WBH/TAN
1	REVISED TEXT LABELS	08/05/21	WBH/TAN
0	AS-BUILT	04/09/21	DBF/MPL/EJP
No.	Description	Date	Dw/Ck/Ap
Revision/Status			
<b>EVERSOURCE</b> ENERGY			
AS-BUILT END POINT TELEMETER CABINET FOR POWER DROP, CELLULAR COMMUNICATION			
120V AC POWER DISTRIBUTION			
SCALE: NTS		SHEET 10 OF 14	
Drawn by / Date DBF / 04/09/21		Checked by / Date MPL / 04/09/21	
Approved by / Date EJP / 04/09/21		Sheet Number MA-NEB-TLM-21-604-55	
		Rev. No. 2	

FIELD VERIFY  
DIMENSIONS  
PRIOR TO PIPE  
FABRICATION



G:\JOBS\22102220069\PROJECTS\ASSIGNMENTS\NEW\_BEDFORD-1\WELBY\_RD\DWG1

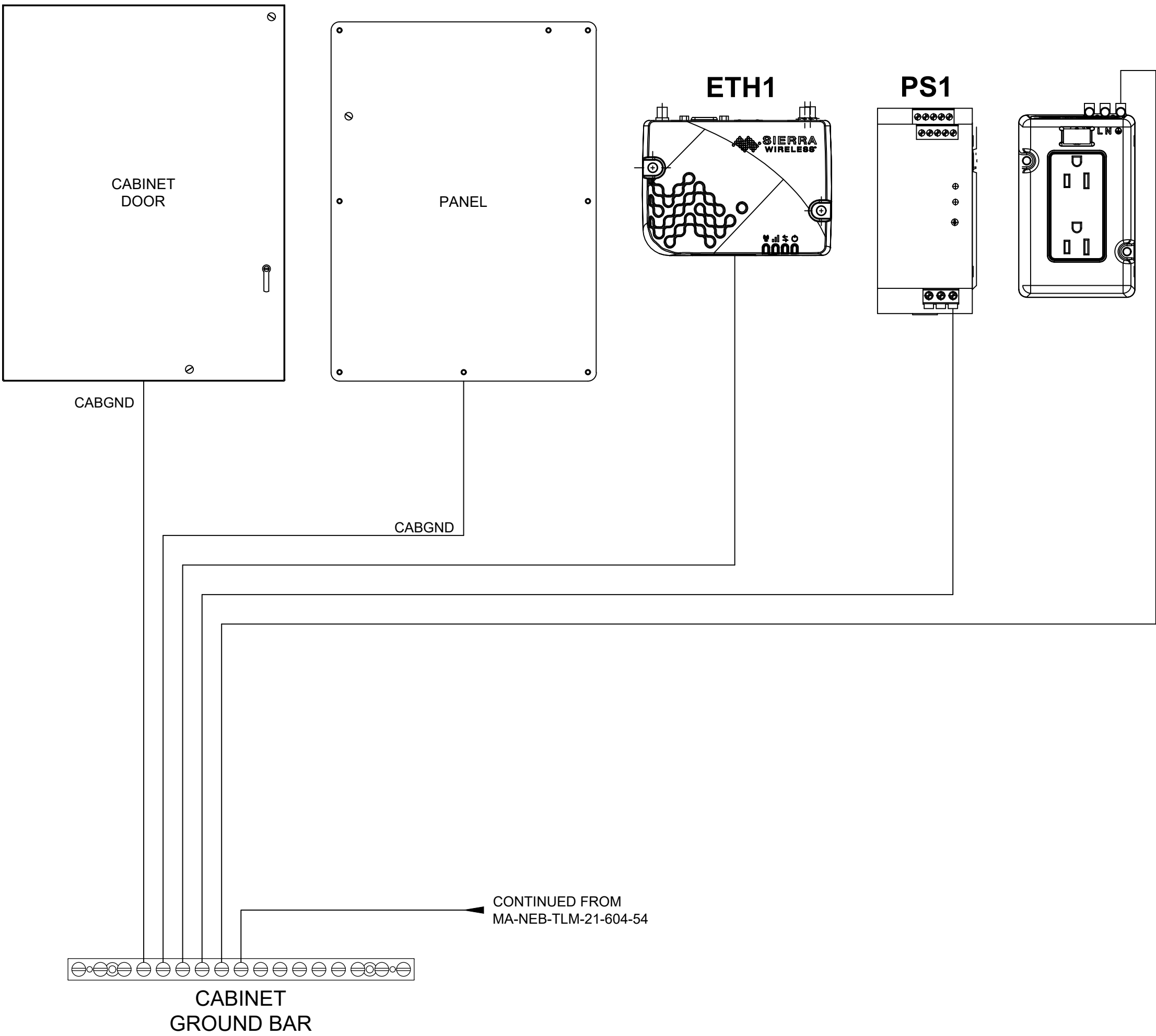


2	REVISED AND ADDED TEXT	04/04/2022	WBH/TAN
1	CHANGED FUSES TO CIRCUIT BREAKERS	08/05/2021	WBH/TAN
0	AS-BUILT	04/09/2021	DBF/MPL/EJP
No.	Description	Date	Dw/Ck/Ap
Revision/Status			
EVERSOURCE ENERGY			
2020 AS-BUILT END POINT TELEMETER CABINET FOR POWER DROP, CELLULAR COMMUNICATION			
24V DC POWER DISTRIBUTION			
SCALE: NTS		SHEET 11 OF 14	
Drawn by / Date DBF / 04/09/21		Checked by / Date MPL / 04/09/21	
Approved by / Date EJP / 04/09/21		Sheet Number MA-NEB-TLM-21-604-56	Rev. No. 2

FIELD VERIFY  
DIMENSIONS  
PRIOR TO PIPE  
FABRICATION

G:\JOBS\22\022000659\PROJECTS\ASSIGNMENTS\NEW\_BEDFORD-1\WELBY\_RD\DWG1

MA-NEB-TLM-21-604 Eversource Gas End Point Telemetry Box											
CONDUIT SCHEDULE / FILL CALCULATION- Based on NFPA 70, 2020 Edition											
ITEM	FROM	To	CONDUIT	WIRE/CABLE	TYPE	MFG	BELDEN PN	COLOR CODE	OD(	Area(Sq	Ext Area(Sq
POWER											
p1	Utility Pole	Meter/Tele Cab	1-1/4", PVC SCH 40	BY ELEC. SERVICE / INSTALL PULL STRING							

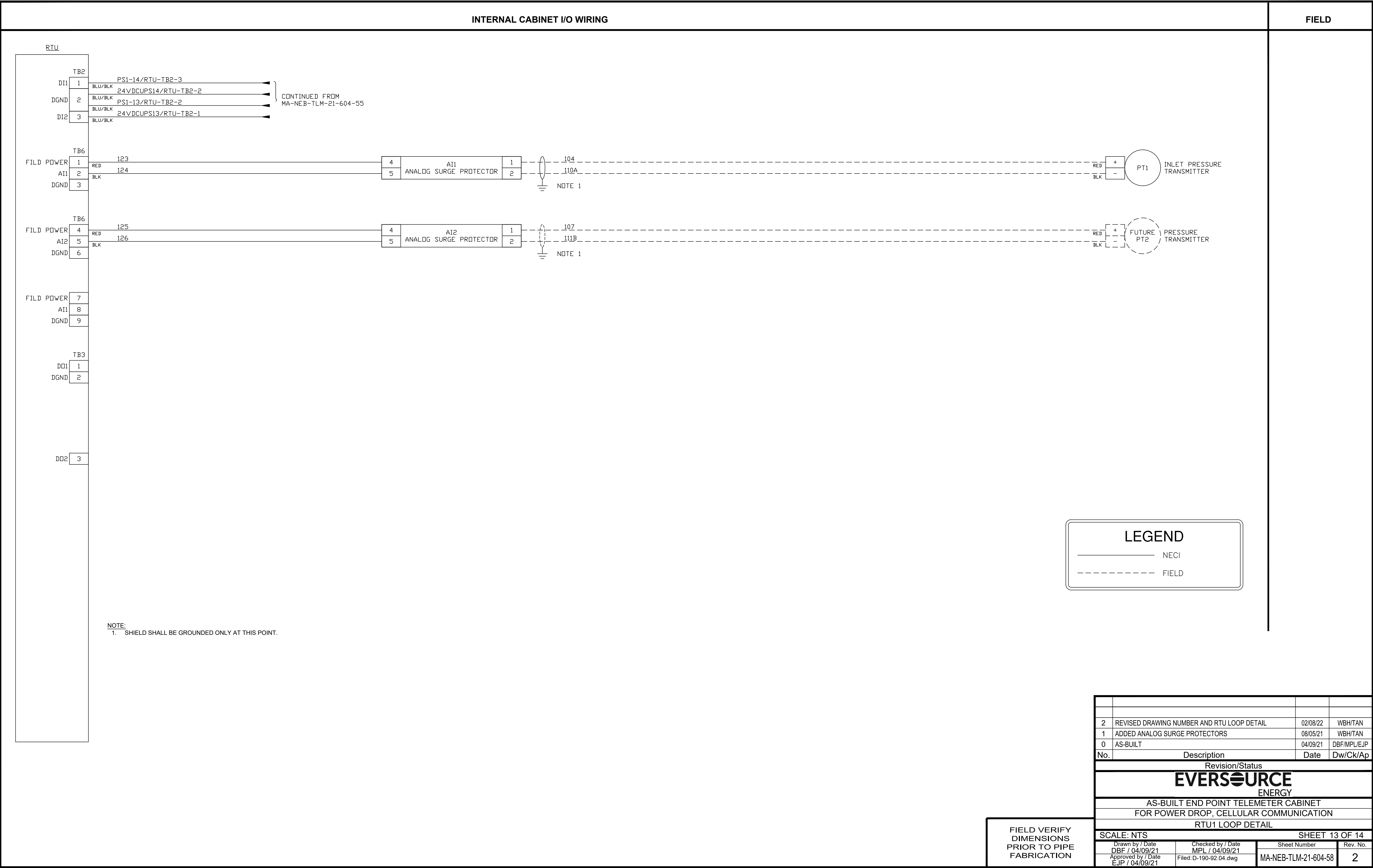


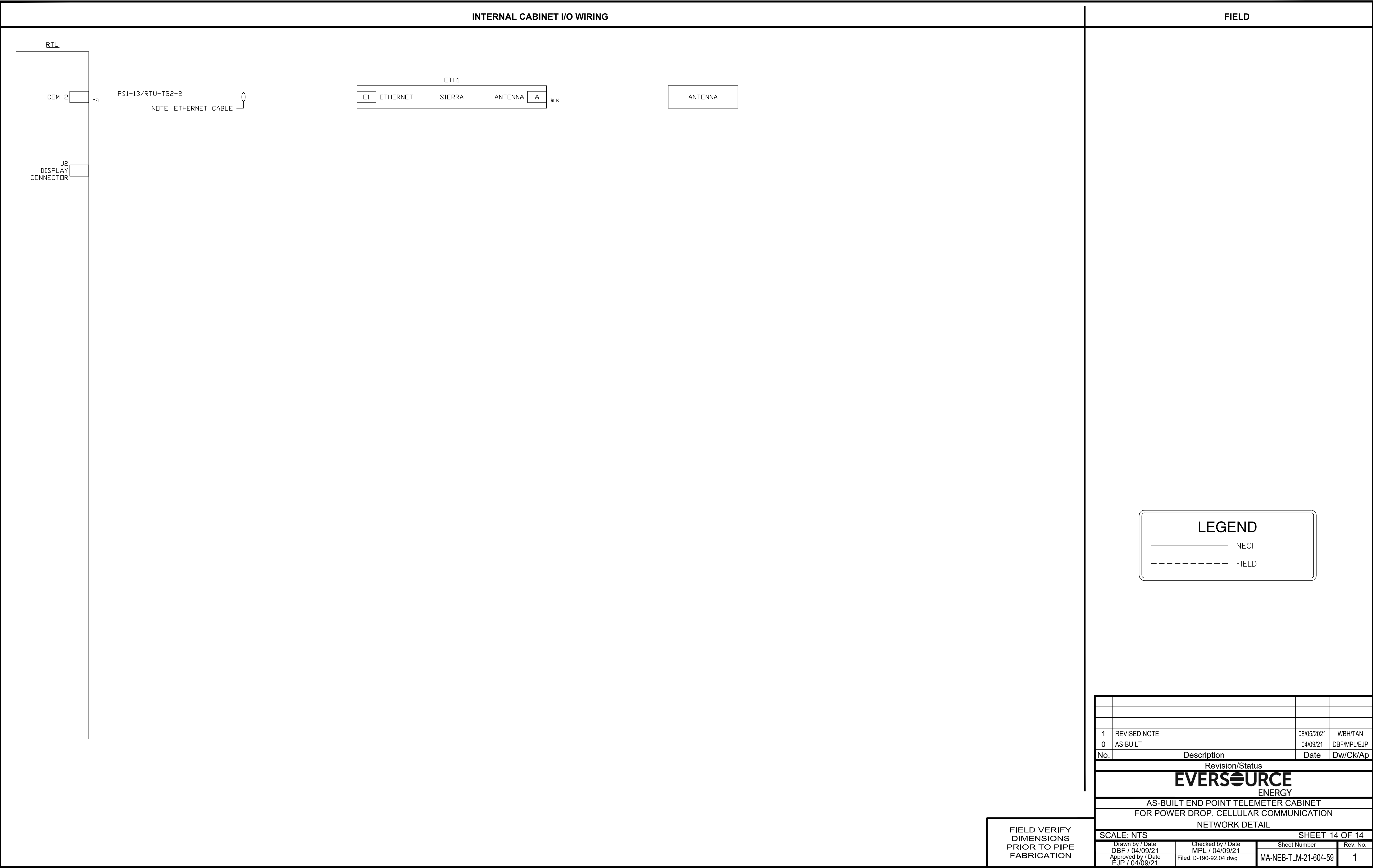
2	REVISED CONDUIT FILL CALCULATION TABLE	02/08/22	WBH/TAN
1	REVISED TEXT	08/05/21	WBH/TAN
0	AS-BUILT	04/09/21	DBF/MPL/EJP
No.	Description	Date	Dw/Ck/Ap
Revision/Status			
<b>EVERSOURCE</b> ENERGY			
AS-BUILT END POINT TELEMETER CABINET			
FOR POWER DROP, CELLULAR COMMUNICATION			
GROUNDING DETAIL & CONDUIT SCHEDULE			
SCALE: NTS		SHEET 12 OF 14	
Drawn by / Date DBF / 04/09/21	Checked by / Date MPL / 04/09/21	Sheet Number	Rev. No.
Approved by / Date EJP / 04/09/21	Filed: D-190-92.04.dwg	MA-NEB-TLM-21-604-57	2

FIELD VERIFY  
DIMENSIONS  
PRIOR TO PIPE  
FABRICATION



G:\JOBS\22\02200859\PROJECTS\ASSIGNMENTS\NEW\_BEDFORD-1\WELBY\_RD\DWG1





G:\JOBS\22\02200\959\PROJECTS\ASSIGNMENTS\NEW\_BEDFORD-1\WELBY\_RD\DWG1