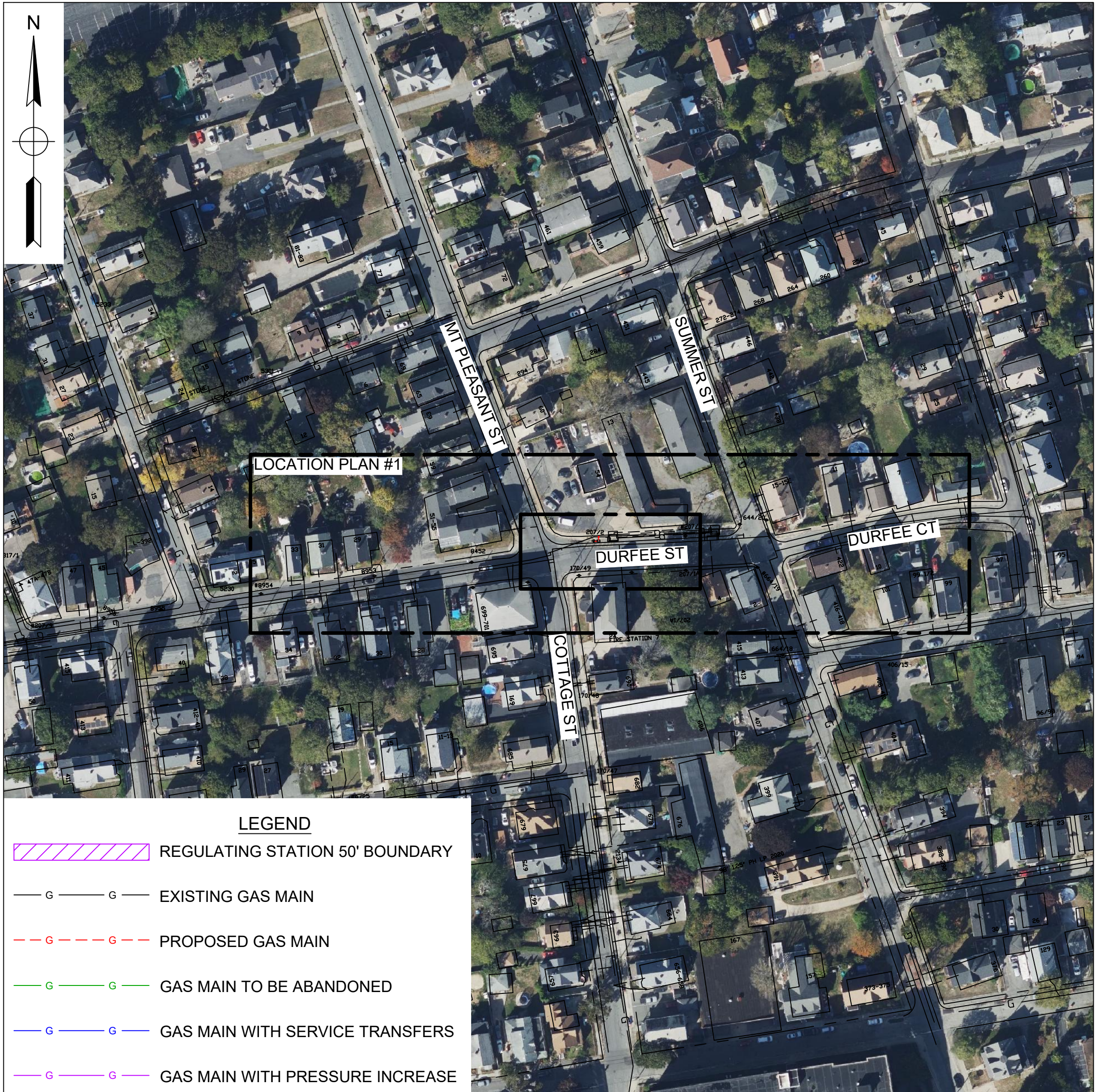


TABLE OF CONTENTS

SHEET #	TITLE
605-01	COVER SHEET
605-02	NOTES AND BILL OF MATERIALS
605-03	LEGEND AND BOLLARD DETAIL
605-04	LOCATION PLAN
605-05	INSTALLATION PLAN
605-51	ENCLOSURE DETAILS
605-52	PANEL LAYOUT/BILL OF MATERIALS
605-53	TERMINAL BLOCK DETAIL
605-54	120V AC POWER DISTRIBUTION
605-55	120V AC POWER DISTRIBUTION
605-56	24V DC POWER DISTRIBUTION
605-57	GROUNDING DETAIL & CONDUIT SCHEDULE
605-58	RTU1 LOOP DETAIL
605-59	NETWORK DETAIL



WORK SCOPE

MAIN

INSTALLATION: REGULATOR TELMETRY
AFFECTED STREETS: DURFEE ST



FIELD VERIFY DIMENSIONS
PRIOR TO PIPE FABRICATION

DURFEE ST, NEW BEDFORD, MA
WORK ORDER #G210312Y

ISSUED FOR
CONSTRUCTION

0	ISSUED FOR CONSTRUCTION	08/14/22	AG/ES
No.	Description	Date	Dw/Ck
Revision/Status			
EVERSOURCE ENERGY			
DURFEE ST, NEW BEDFORD, MA			
WORK ORDER #G210312Y			
COVER SHEET			
SCALE: 1" = 100'		SHEET 01 OF 14	
Drawn by / Date	Checked by / Date	Drawing Number	Rev. No.
AJG 08/01/22	EJS 08/14/22	MA-NEB-TLM-21-605-01	0

MA-NEB-TLM-21-605.dwg


G:\OBS22\02\200359\PROJECTS\ASSIGNMENTS\NEW_BEDFORD-DURFEE_STD\WG1

- GENERAL NOTES:
- IF ANY OF THE FOLLOWING OCCUR A DRAWING REVISION IS REQUIRED AND MUST BE APPROVED AND/OR STAMPED BY THE ENGINEER OF RECORD. CHANGES CAN BE APPROVED AND/OR STAMPED BY A PROJECT ENGINEER, BUT THE ENGINEER OF RECORD MUST BE INFORMED.
 - IF THE TIE IN POINT MOVES TO A DIFFERENT SEGMENT OF PIPE THAN SHOWN.
 - IF A CHANGE IN THE LOCATION OF VALVES IS REQUIRED.
 - IF THERE IS ANY CHANGE TO WHAT IS SHOWN ON THE DRAWING WITHIN 50 FT OF A PRESSURE REGULATING STATION, DISTRICT REGULATOR, OR GATE STATION.
 - IF A CHANGE IN PIPE SIZE, MATERIAL, OR WALL THICKNESS IS REQUIRED.
 - ALTERNATE FITTINGS THAT ARE ACCEPTABLE FOR ANY TIE-IN DETAIL WILL BE CALLED OUT IN THE DRAWING. FITTING CHANGES NOT SHOWN AS ALTERNATIVES ON THE DRAWING WILL NEED TO FOLLOW THE DRAWING CHANGE PROCESS CONTAINED IN SECTION V.D.
 - CONSTRUCTION DRAWINGS, LOCATIONS OF EXISTING UTILITIES, UNDERGROUND STRUCTURES AND WORK LOCATIONS ARE BASED ON BEST AVAILABLE INFORMATION BUT HAVE NOT BEEN FIELD VERIFIED.
 - ALL WORK, MATERIAL AND CONSTRUCTION SHALL BE PERFORMED AND COMPLETED IN COMPLIANCE WITH ALL PERMITS AND APPROVALS PER EVERSOURCE, LOCAL, STATE, OSHA AND FEDERAL REGULATIONS AND STANDARDS.
 - ALL LIVE GAS WORK EXCEPT SERVICE SIZE TAPS, INCLUDING BUT NOT LIMITED TO TAPPING OF FITTINGS ON LIVE MAINS, STOPPING, MANIPULATING VALVE, ABANDONMENT, SHALL BE PERFORMED BY, OR AT THE DIRECTION AND UNDER THE DIRECT SUPERVISION OF EVERSOURCE GAS PERSONNEL AND IN ACCORDANCE WITH THE WRITTEN PROCEDURE. DRAWING CHANGES MAY ALSO REQUIRE A CHANGE TO THE PROCEDURE.
 - EXCAVATOR IS REQUIRED TO PROTECT EXISTING UTILITIES, STRUCTURES, LANDSCAPES FEATURES, SIGNAGE, CURBS, ETC. CARE SHOULD BE TAKEN NOT TO DISTURB OR DAMAGE SUCH ITEMS. ROADWAY, SIDEWALKS, AND GRASS DISTURBED SHALL BE RESTORED TO THE SATISFACTION OF THE CITY OR TOWN. PLANT BEDS WILL BE RELOCATED TO THEIR EXISTING REGULAR LOCATION.
 - ALL TRAFFIC CONTROL SHALL CONFORM TO THE LATEST EDITION OF THE MANUAL OF UNIFORM TRAFFIC CONTROL DEVICES (MUTCD), INCLUDING ALL REVISIONS AND ADDENDA. ALL TRAFFIC CONTROL DEVICES WILL BE SUPPLIED BY EXCAVATOR.

BILL OF MATERIAL				
ITEM	SIZE	DESCRIPTION	QTY	UNIT
1	1-1/4"	RMC CONDUIT, GALVANIZED, PVC COATED	40	FT
2	3/4"	TEE,PIPE, NON-BLOWING, 3/4 IN X 3/4 CTS PLASTIC X 3/8 IN PERF SDR 9.7, WELD INLET X COMPRESSION OUTLET ENDS, LIGHT WALL, STEEL	1	EA
3	3/4"	VALVE,BALL, FULL PORT, SERVICE, 3/4 IN CTS, 0.090 WALL, SDR 9.7, PE 4710, POLYETHYLENE, BUTT FUSE, BLACK FINISH	1	EA
4	3/4"	PIPE, 3/4 IN CTS X 0.090 IN THK WALL SDR 9.7, 7/8 IN OD, 500 FT LG COIL, POLYETHYLENE, PE3408/PE100	40	FT
6	3/4"	RISER, SERVICE, STRAIGHT, 3/4 IN CTS X 0.090 IN THK WALL SDR 9.7	1	EA
7	3/4"	VALVE, SERVICE, 3/4 IN, THREADED ENDS, LOCK-WING TAMPER PROOF, BLACK FINISH	1	EA
8	3/4"	COUPLING, METFIT, 3/4 IN CTS, 0.090 IN THK WALL SDR 9.7, PLASTIC, PE-4710	3	EA
9	4 1/4" square	BOX VALVE, CURB, W/ 4-1/4 IN SQ COVER NON-LOCKING LID, FOR 1/2 , 3/4, 1 , 1-1/4 , CURB VALVES, PAVEMENT RISER RING IN 583489, 48/SKID	1	EA

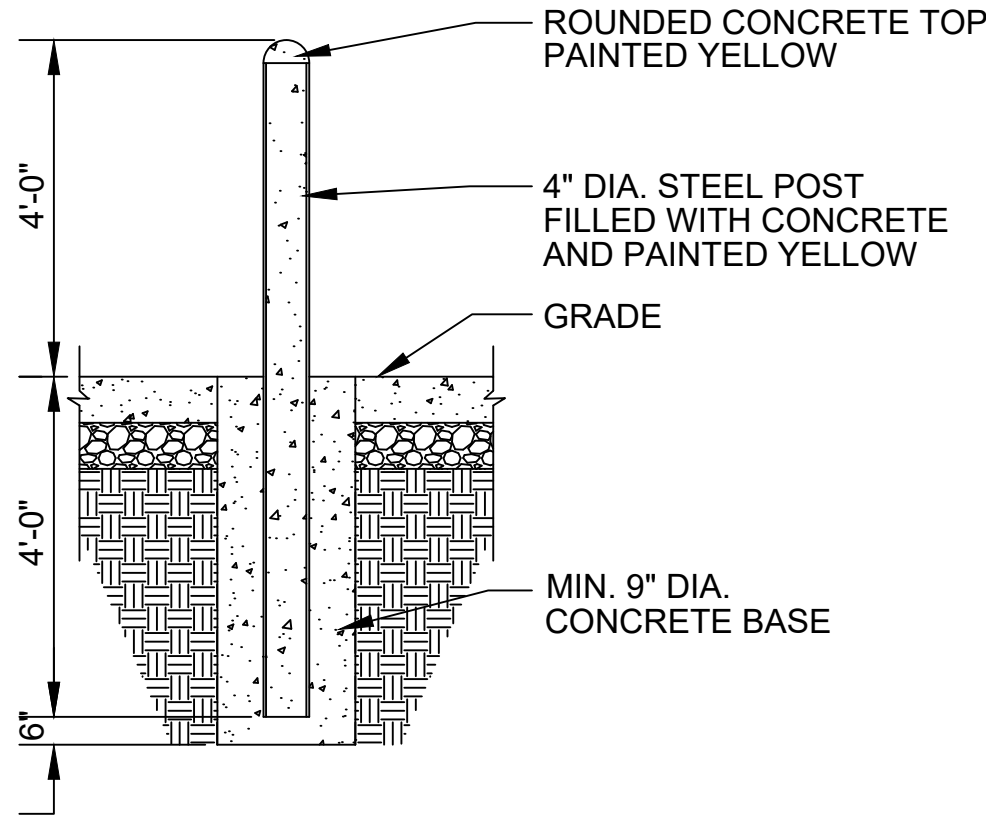
- * NOTE:
- ADDITIONAL ELBOWS MAY BE REQUIRED FOR OFFSETS IN THE FIELD
 - ALL MATERIALS SHALL BE INSTALLED IN COMPLIANCE WITH THE MANUFACTURER'S INSTALLATION INSTRUCTIONS.

ISSUED FOR
CONSTRUCTION

<div><div>Architecture Engineering Environmental Land Surveying Companies</div></div>	<div>FIELD VERIFY DIMENSIONS PRIOR TO PIPE FABRICATION</div>	0 ISSUED FOR CONSTRUCTION08/14/22AG/ES			
		No.	Description	Date	Dw/Ck
		Revision/Status			
		EVERSOURCEENERGY			
		DURFEE ST, NEW BEDFORD, MA			
		WORK ORDER #G210312Y			
		NOTES			
		SCALE: NOT TO SCALE		SHEET 02 OF 14	
		Drawn by / Date	Checked by / Date	Drawing Number	Rev. No.
		AJG 08/01/22	EJS 08/14/22	MA-NEB-TLM-21-605-02	0

FIELD VERIFY DIMENSIONS
PRIOR TO PIPE FABRICATION





PROTECTIVE POST (BOLLARD) DETAIL
SCALE: NTS

DRAWING LEGEND			
	MANHOLE		REGULATING STATION 50' BOUNDARY
	UTILITY POLE		EXISTING GAS MAIN
	CATCH BASIN		PROPOSED GAS MAIN
	HYDRANT		GAS MAIN TO BE ABANDONED
	INSIDE METER		GAS MAIN WITH SERVICE TRANSFERS
	OUTSIDE METER		GAS MAIN WITH PRESSURE INCREASE
	LIGHT POLE		RIGHT-OF-WAY
	ELECTRIC MANHOLE		ELECTRIC
	TELEPHONE MANHOLE		WATER LINE
	VALVE		SEWER LINE
	SERVICE TEE		TELEPHONE
			DRAIN LINE
			FENCE LINE

ISSUED FOR
CONSTRUCTION

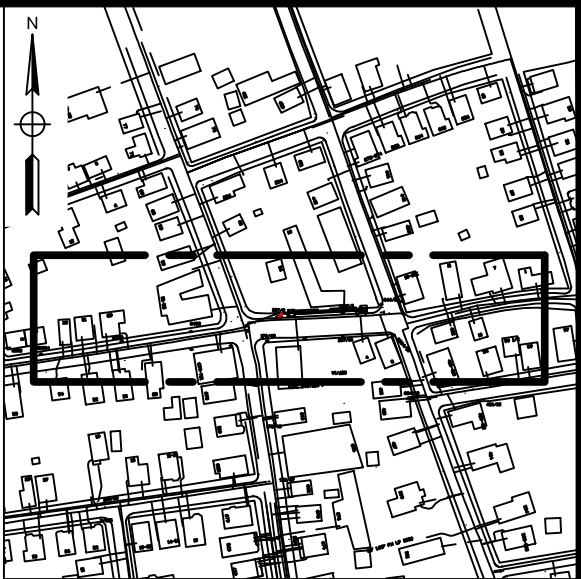
0	ISSUED FOR CONSTRUCTION	08/14/22	AG/ES
No.	Description	Date	Dw/Ck
Revision/Status			
EVERSOURCE ENERGY			
DURFEE ST, NEW BEDFORD, MA			
WORK ORDER #G210312Y			
LEGEND			
SCALE: NOT TO SCALE		SHEET 03 OF 14	
Drawn by / Date	Checked by / Date	Drawing Number	Rev. No.
AJG 08/01/22	EJS 08/14/22	MA-NEB-TLM-21-605-03	0



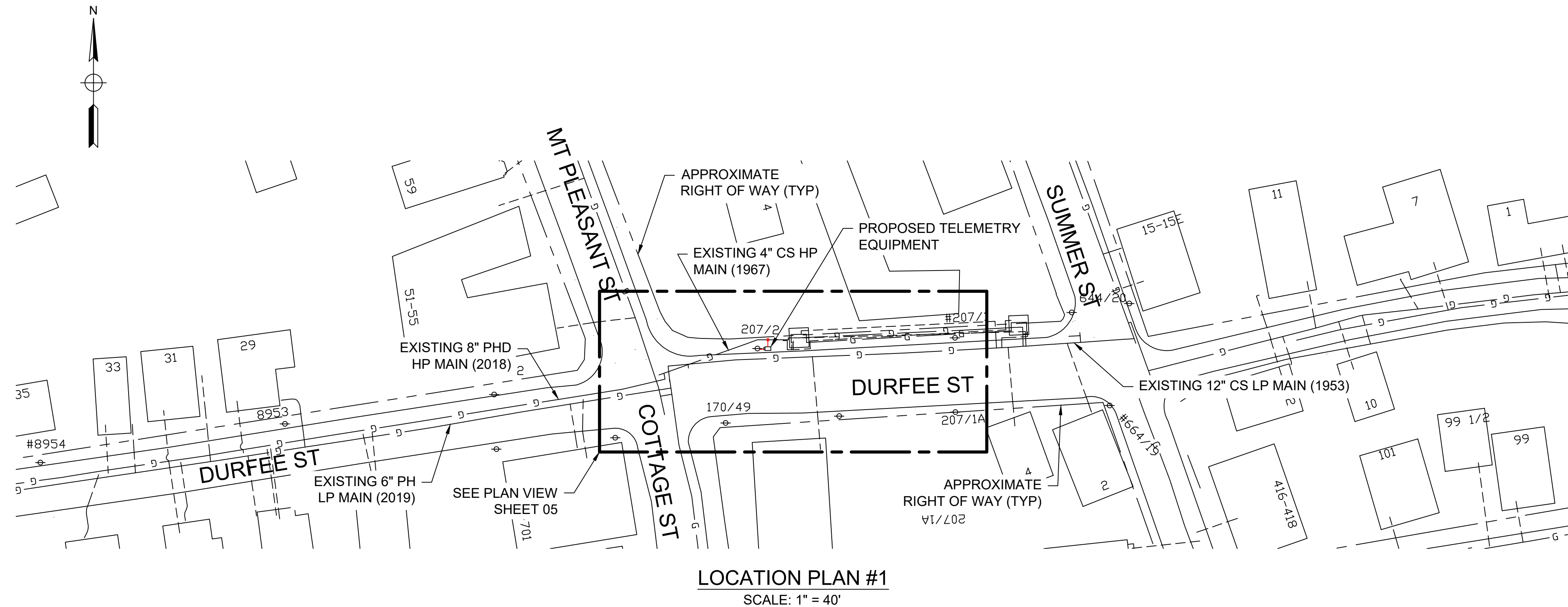
FIELD VERIFY DIMENSIONS
PRIOR TO PIPE FABRICATION

MA-NEB-TLM-21-605.dwg


G:\OBS22\02200359\PROJECTS\ASSIGNMENTS\NEW_BEDFORD-DURFEE_STD\WG1



KEY MAP
SCALE: N.T.S.



ISSUED FOR CONSTRUCTION



Architecture
Engineering
Environmental
Land Surveying
Companies

FIELD VERIFY DIMENSIONS
PRIOR TO PIPE FABRICATION

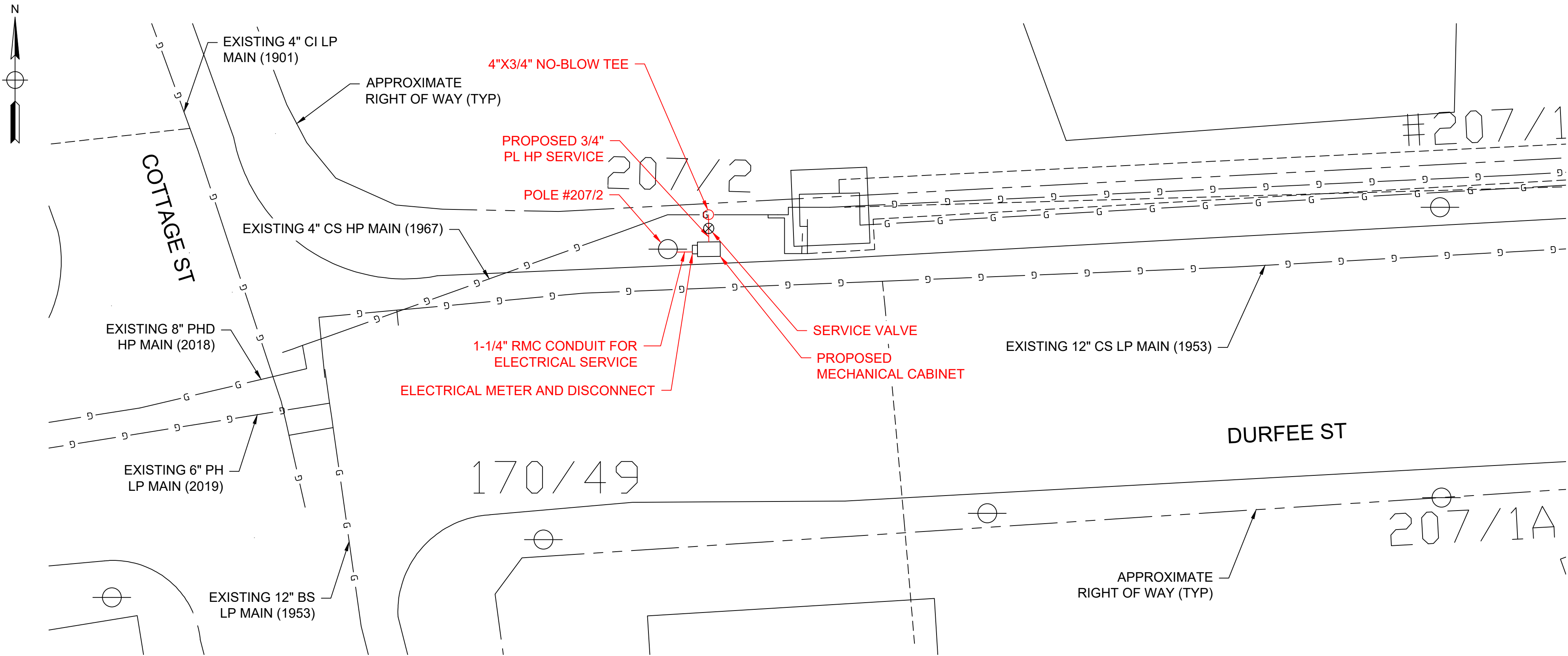
0	ISSUED FOR CONSTRUCTION	08/14/22	AG/ES
No.	Description	Date	Dw/Ck
Revision/Status			
EVERSOURCE ENERGY			
DURFEE ST, NEW BEDFORD, MA			
WORK ORDER #G210312Y			
LOCATION PLAN #1			
SCALE: AS NOTED		SHEET 04 OF 14	
Drawn by / Date	Checked by / Date	Drawing Number	Rev. No.
AJG 08/01/22	EJS 08/14/22	MA-NEB-TLM-21-605-04	0

MA-NEB-TLM-21-605.dwg

G:\OBS22\02200359\PROJECTS\ASSIGNMENTS\NEW_BEDFORD-DURFEE_STIDWG\



KEY MAP
SCALE: N.T.S.



LOCATION PLAN #2
SCALE: 1" = 10'

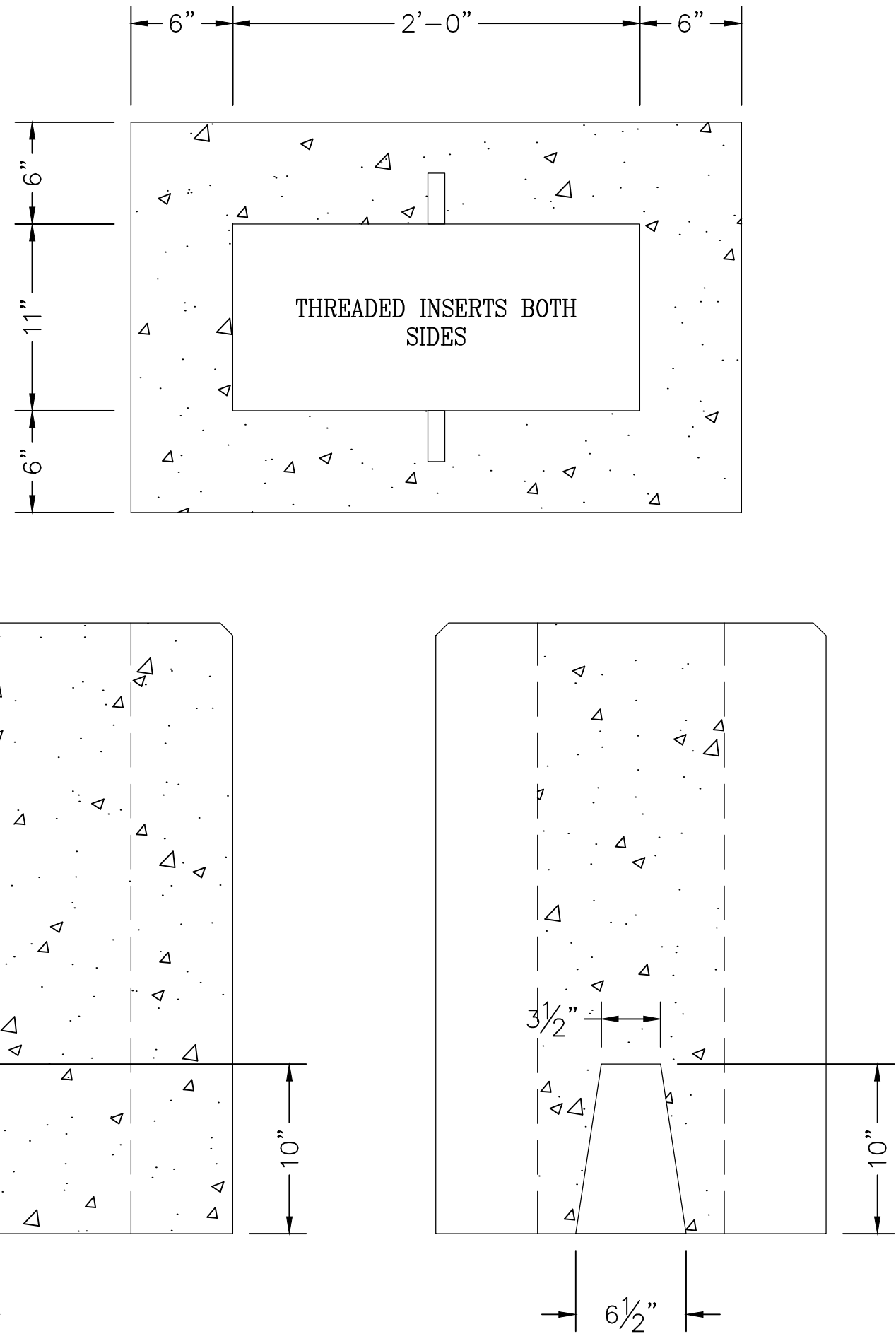
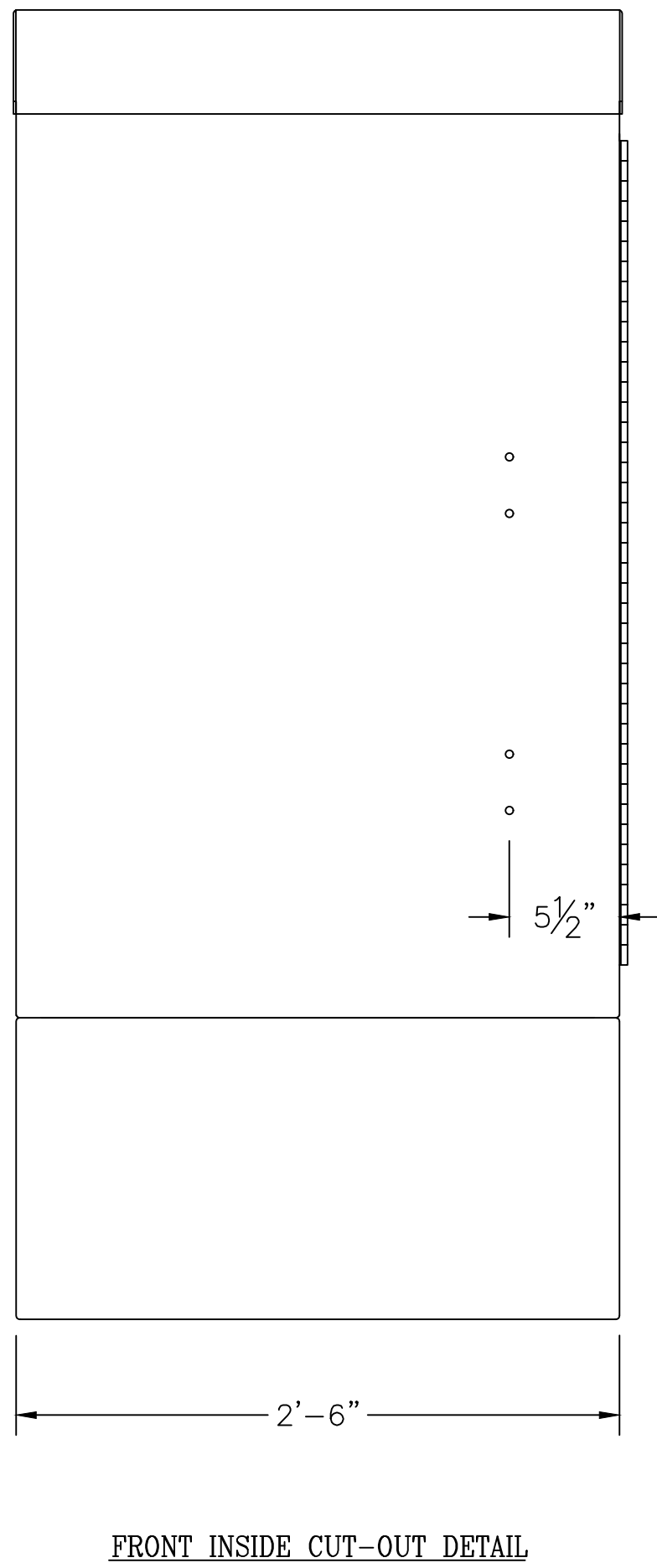
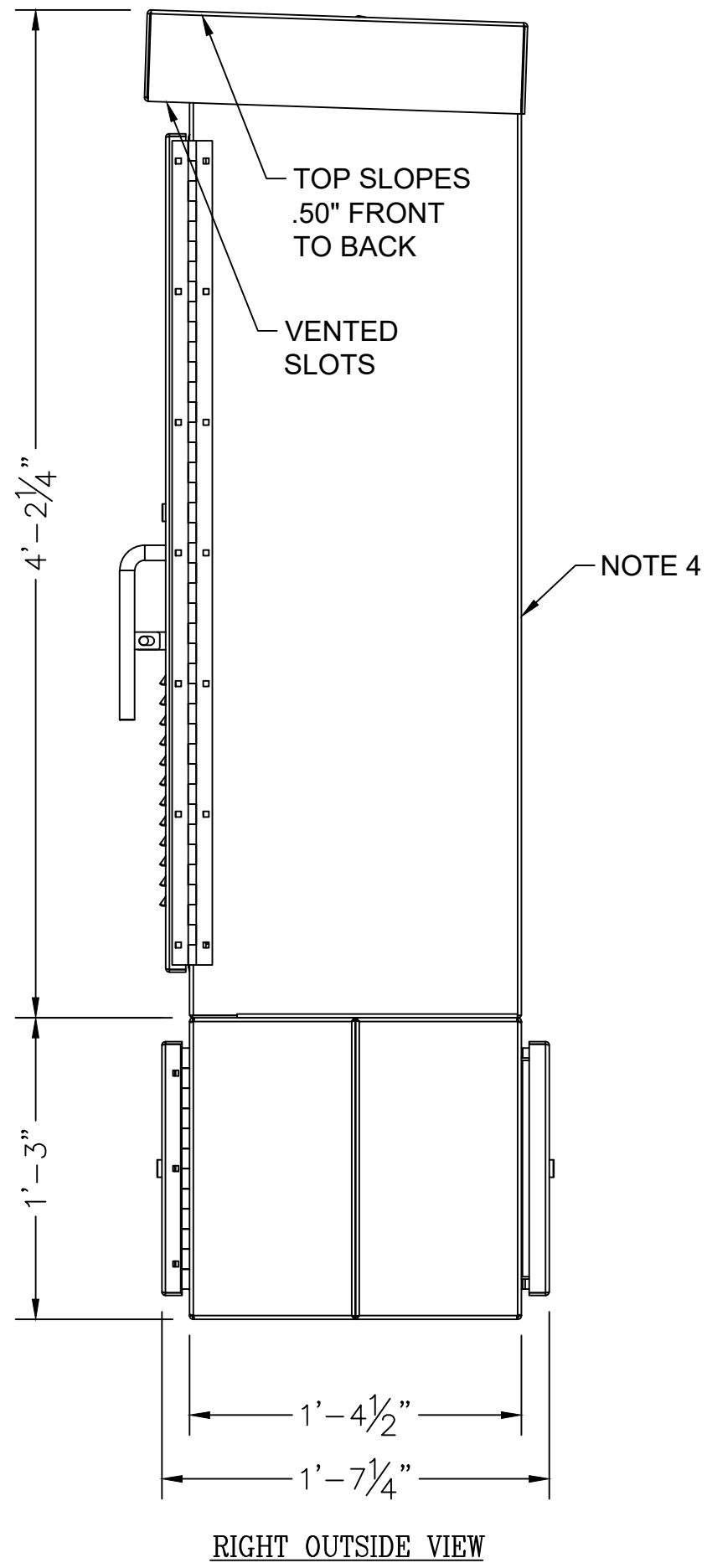
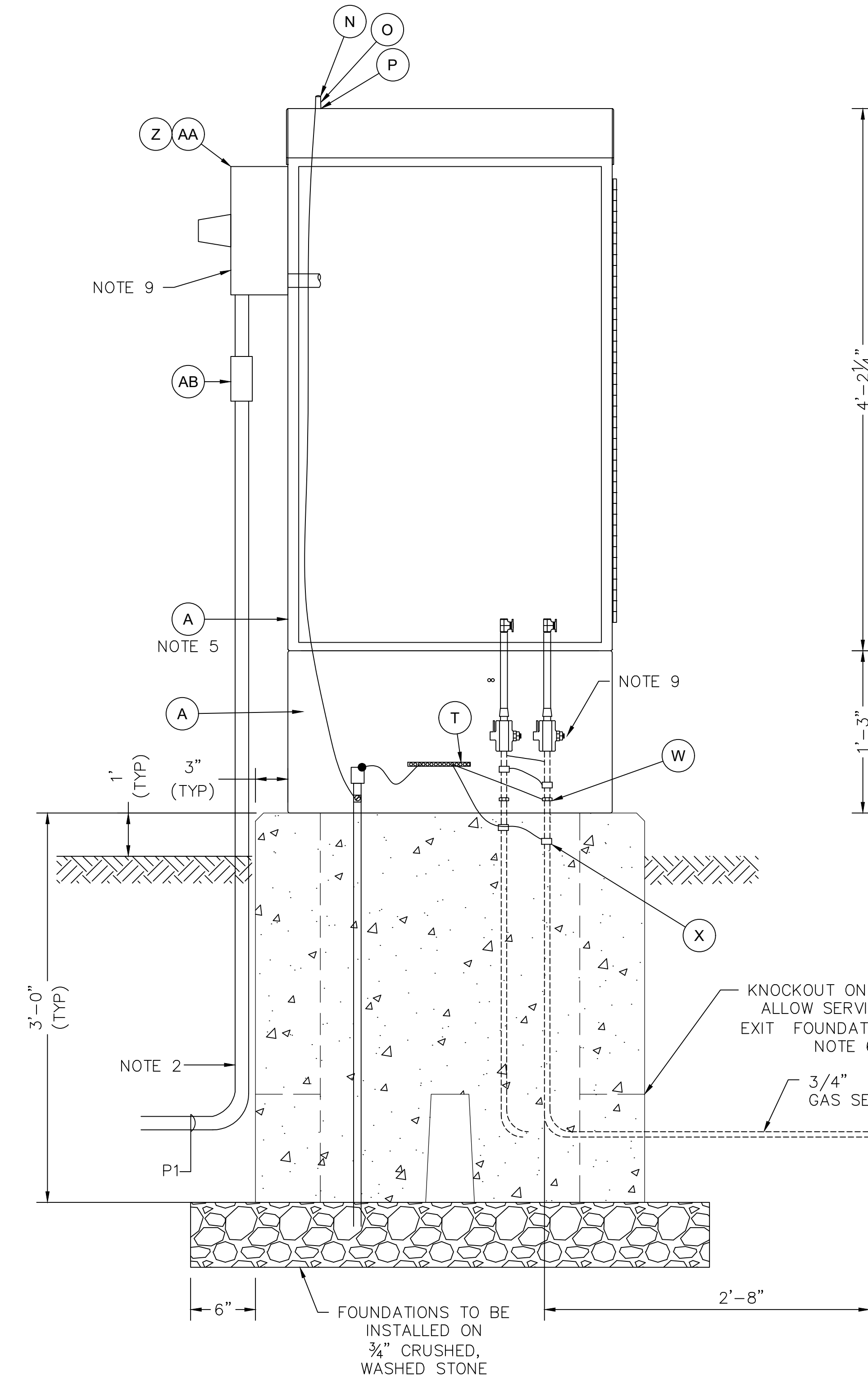
ISSUED FOR
CONSTRUCTION

0	ISSUED FOR CONSTRUCTION	08/14/22	AG/ES
No.	Description	Date	Dw/Ck
Revision/Status			
EVERSOURCE ENERGY			
DURFEE ST, NEW BEDFORD, MA			
WORK ORDER #G210312Y			
LOCATION PLAN #2			
SCALE: AS NOTED		SHEET 05 OF 14	
Drawn by / Date	Checked by / Date	Drawing Number	Rev. No.
AJG 08/01/22	EJS 08/14/22	MA-NEB-TLM-21-605-05	0



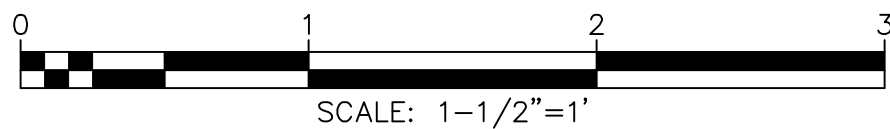
FIELD VERIFY DIMENSIONS
PRIOR TO PIPE FABRICATION

G:\JOBS\22\022200359\PROJECTS\ASSIGNMENTS\NEW_BEDFORD-DURFEE_STDWG1



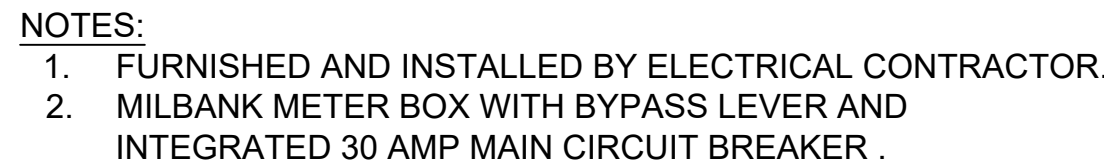
NOTES:


- EFV TO BE INSTALLED PER MANUFACTURERS REQUIREMENTS. EFV SHALL BE PROPERLY SIZED FOR APPLICATION PER EVERSOURCE STANDARDS AND MANUFACTURERS REQUIREMENTS.
- SERVICE CONNECTION TO CABINET SHALL BE IN ACCORDANCE WITH NFPA 70, THE REQUIREMENT OF THE LOCAL UTILITY AND THE AUTHORITY HAVING JURISDICTION (AHJ). IF A METER IS REQUIRED, IT SHALL BE LOCATED EXTERNAL TO THE CABINET .
- AN EFV WILL BE INSTALLED ON EACH GAS LINE TO A TRANSMITTER.
- EQUIPMENT SHALL BE MOUNTED NEAT AND PLUMB.
- INSTALL STANDOFFS TO THE BACK PLANE OF EACH CABINET.
- ALL BELOW GRADE OPENINGS IN POLL BOX SHALL BE PARGED WITH CONCRETE.
- MARK CONDUIT AT 18" INTERVALS WITH 1 BAND BLUE SCOTCH 35 MARKING TAPE.
- METER TROUGH & CIRCUIT BREAKER SHALL BE BY ELECTRICAL CONTRACTOR, METER BY UTILITY.
- MOUNT AS LOW AS POSSIBLE IN LOWER CABINET (ALL EYS CONNECTORS)



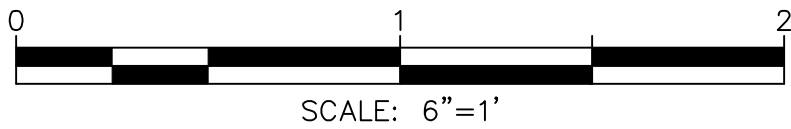
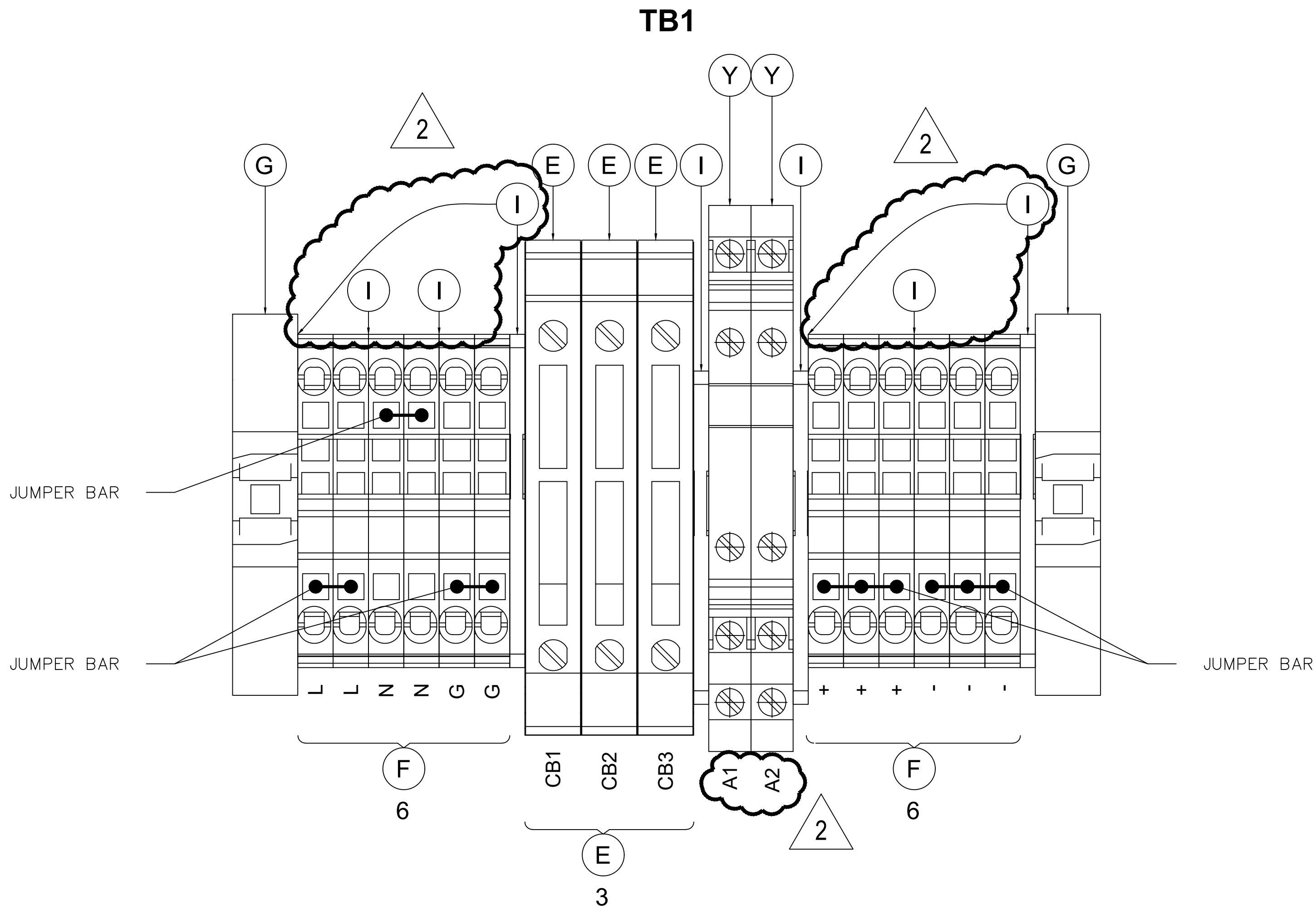
FIELD VERIFY
DIMENSIONS
PRIOR TO PIPE
FABRICATION

2	REVISED NOTES AND ELEVATION VIEW	02/08/22	WBH/TAN
1	REMOVED DETAILS ADDED NOTE	08/05/21	WBH/TAN
0	AS-BUILT	04/09/21	DBF/MPL/EJP
No.	Description	Date	Dw/Ck/Ap
Revision/Status			
EVERSOURCE ENERGY			
AS-BUILT END POINT TELEMETER CABINET			
FOR POWER DROP, CELLULAR COMMUNICATION			
ENCLOSURE DETAILS			
SCALE: 1-1/2" = 1'		SHEET 6 OF 14	
Drawn by / Date DBF / 04/09/21	Checked by / Date MPL / 04/09/21	Sheet Number MA-NEB-TLM-21-605-51	Rev. No. 2
Approved by / Date EJP / 04/09/21	Filed: D-190-92.04.dwg		



3	REVISED BOM AND DIMENSIONS	04/11/22	WBH/TAN
2	REVISED BOM, DETAIL AND ADDED NOTES	02/08/22	WBH/TAN
1	REVISED BILL OF MATERIALS	08/06/21	WBH/TAN
0	AS-BUILT	04/09/21	DBF/MPL/EJP
No.	Description	Date	Dw/Ck/Ap
Revision/Status			
<div style="text-align: center;">  </div>			
AS-BUILT END POINT TELEMETER CABINET			
FOR POWER DROP, CELLULAR COMMUNICATION			
PANEL LAYOUT/BILL OF MATERIALS			
SCALE: 3" = 1'		SHEET 7 OF 14	
Drawn by / Date DBF / 04/09/21	Checked by / Date MPL / 04/09/21	Sheet Number	Rev. No.
Approved by / Date EJP / 04/09/21	Filed: D-190-92.04.dwg	MA-NEB-TLM-21-605-52	3

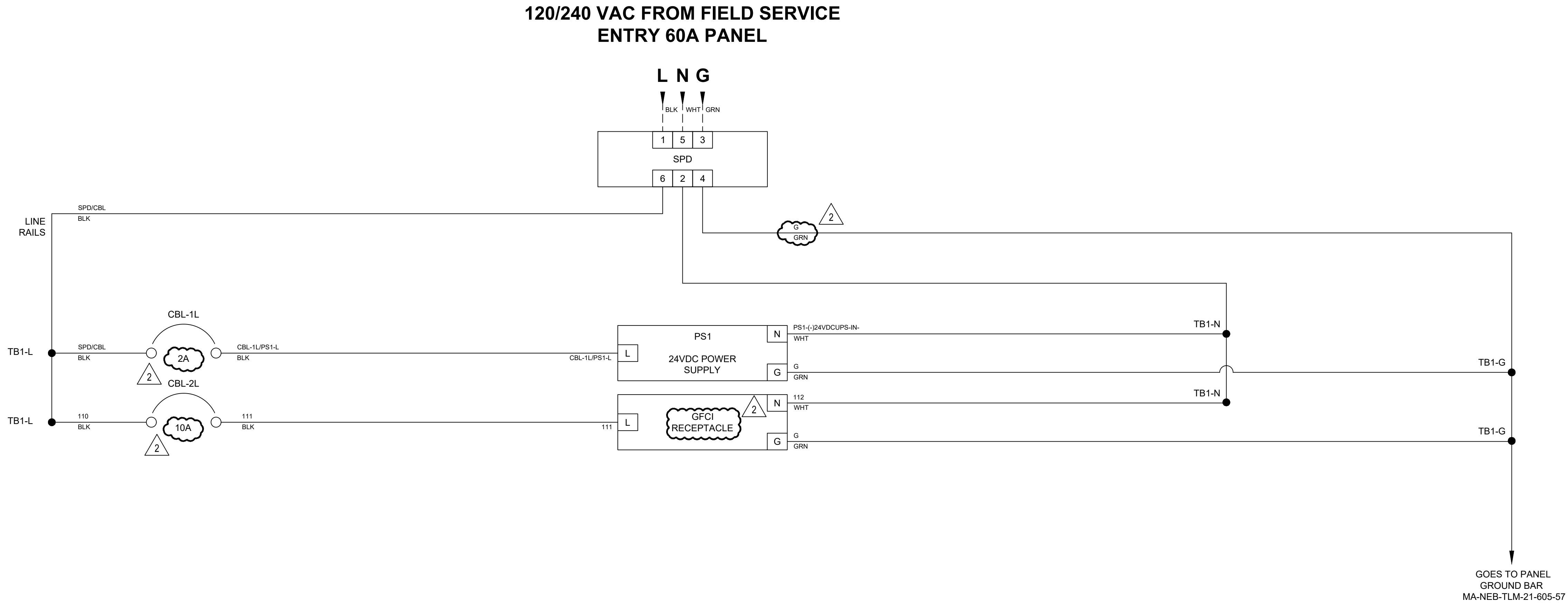
G:\JOBS\22\022200359\PROJECTS\ASSIGNMENTS\NEW_BEDFORD-DURFEE_STD.WG1



2	ADDED TEXT AND LEADERS	04/04/2022	WBH/TAN
1	ADDED ANALOG SURGE PROTECTORS	08/06/2021	WBH/TAN
0	AS-BUILT	04/09/21	DBF/MPL/EJP
No.	Description	Date	Dw/Ck/Ap
Revision/Status			
EVERSOURCE ENERGY			
AS-BUILT END POINT TELEMETER CABINET FOR POWER DROP, CELLULAR COMMUNICATION			
TERMINAL BLOCK DETAIL			
SCALE: 6" = 1'		SHEET 8 OF 14	
Drawn by / Date DBF / 04/09/21	Checked by / Date MPL / 04/09/21	Sheet Number	Rev. No.
Approved by / Date EJP / 04/09/21	Filed: D-190-92.04.dwg	MA-NEB-TLM-21-605-53	2

FIELD VERIFY
DIMENSIONS
PRIOR TO PIPE
FABRICATION

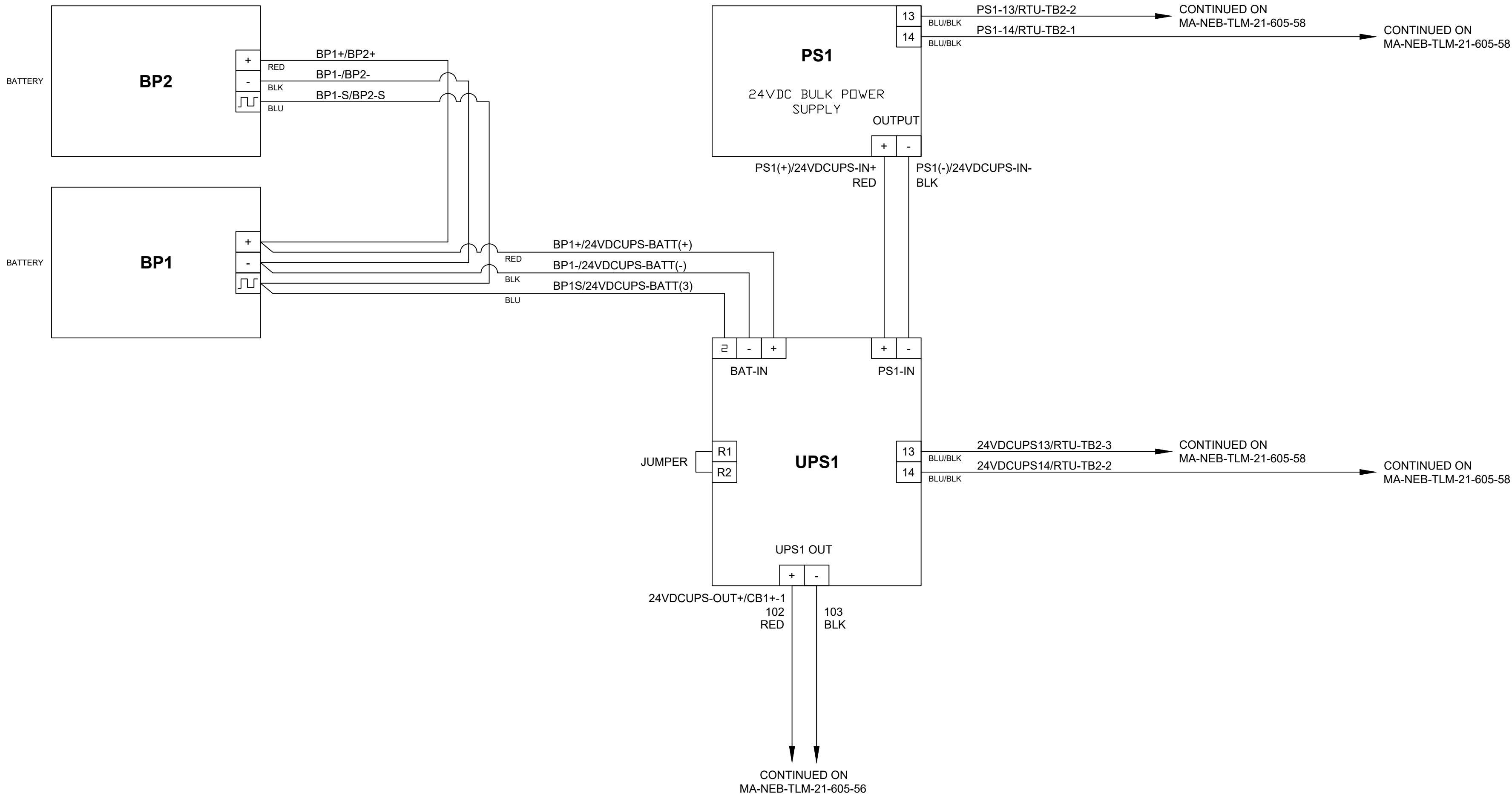
G:\JOBS\22\02200859\PROJECTS\ASSIGNMENTS\NEW BEDFORD-DURFEE STDWG1



2	ADDED AND REVISED TEXT	04/04/2022	WBH/TAN
1	REVISED CB TEXT	08/06/2021	WBH/TAN
0	AS-BUILT	04/09/21	DBF/MPL/EJP
No.	Description	Date	Dw/Ck/Ap
Revision/Status			
EVERSOURCE ENERGY			
AS-BUILT END POINT TELEMETER CABINET FOR POWER DROP, CELLULAR COMMUNICATION			
120V AC POWER DISTRIBUTION			
SCALE: NTS		SHEET 9 OF 14	
Drawn by / Date DBF / 04/09/21	Checked by / Date MPL / 04/09/21	Sheet Number MA-NEB-TLM-21-605-54	Rev. No. 2
Approved by / Date EJP / 04/09/21	Filed: D-190-92.04.dwg		

FIELD VERIFY
DIMENSIONS
PRIOR TO PIPE
FABRICATION

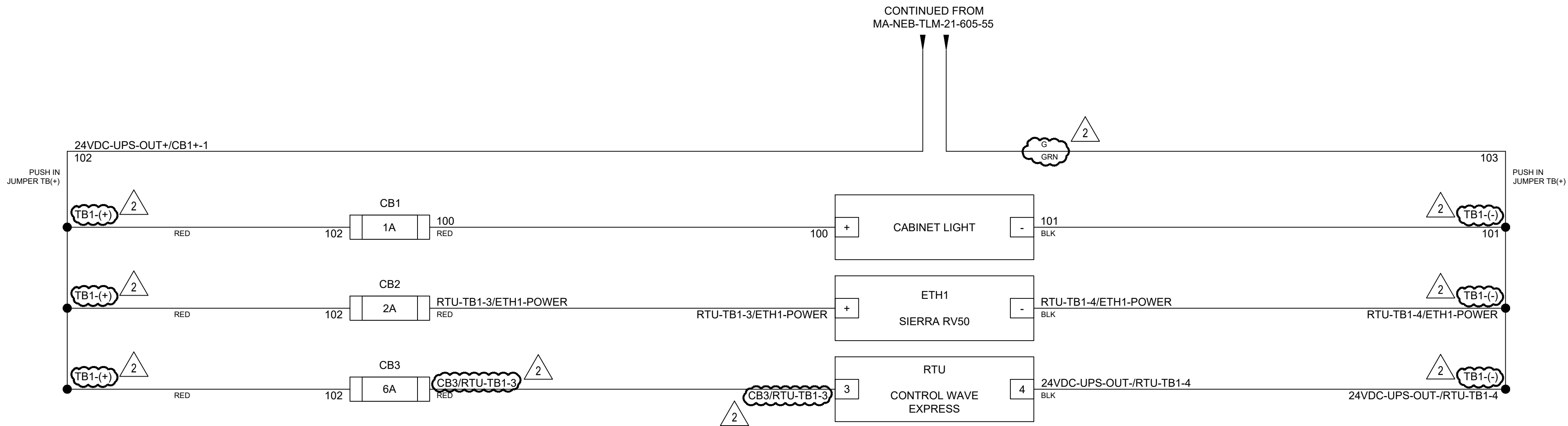
G:\JOBS\221022200859\PROJECTS\ASSIGNMENTS\NEW BEDFORD-DURFEE STDW61



2	REVISED TEXT	12/09/21	WBH/TAN
1	REVISED TEXT LABELS	08/05/21	WBH/TAN
0	AS-BUILT	04/09/21	DBF/MPL/EJP
No.	Description	Date	Dw/Ck/Ap
Revision/Status			
EVERSOURCE ENERGY			
AS-BUILT END POINT TELEMETER CABINET			
FOR POWER DROP, CELLULAR COMMUNICATION			
120V AC POWER DISTRIBUTION			
SCALE: NTS		SHEET 10 OF 14	
Drawn by / Date	Checked by / Date	Sheet Number	Rev. No.
DBF / 04/09/21	MPL / 04/09/21	MA-NEB-TLM-21-605-55	2
Approved by / Date	Filed: D-190-92.04.dwg		
EJP / 04/09/21			

FIELD VERIFY
DIMENSIONS
PRIOR TO PIPE
FABRICATION

G:\JOBS\221022200659\PROJECTS\ASSIGNMENTS\NEW BEDFORD-DURFEE STD.WG1



2	REVISED AND ADDED TEXT	04/04/2022	WBH/TAN
1	CHANGED FUSES TO CIRCUIT BREAKERS	08/05/2021	WBH/TAN
0	AS-BUILT	04/09/2021	DBF/MPL/EJP
No.	Description	Date	Dw/Ck/Ap
Revision/Status			
EVERSOURCE ENERGY			
2020 AS-BUILT END POINT TELEMETER CABINET FOR POWER DROP, CELLULAR COMMUNICATION			
24V DC POWER DISTRIBUTION			
SCALE: NTS		SHEET 11 OF 14	
Drawn by / Date DBF / 04/09/21		Checked by / Date MPL / 04/09/21	
Approved by / Date EJP / 04/09/21		Sheet Number MA-NEB-TLM-21-605-56	Rev. No. 2

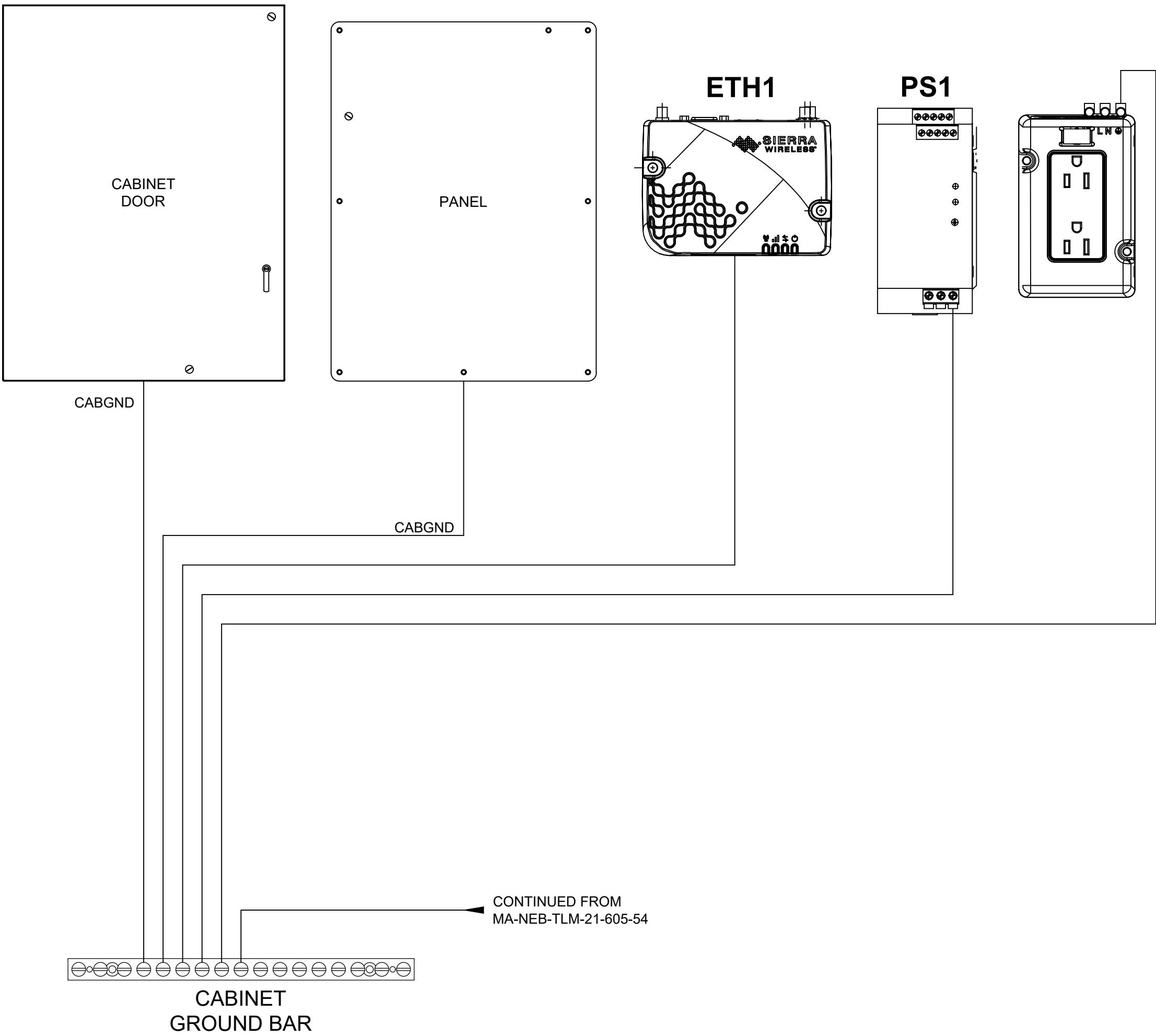
FIELD VERIFY
DIMENSIONS
PRIOR TO PIPE
FABRICATION

G:\JOBS\22\022200659\PROJECTS\ASSIGNMENTS\NEW_BEDFORD-DURFEE_STD.WG1

NOTE 5

MA-NEB-TLM-21-605 Eversource Gas End Point Telemetry Box											
CONDUIT SCHEDULE / FILL CALCULATION- Based on NFPA 70, 2020 Edition											
ITEM	FROM	To	CONDUIT	WIRE/CABLE	TYPE	MFG	BELDEN PN	COLOR CODE	OD(Area(Sq")	Ext Area(Sq")
POWER											
p1	Utility Pole	Meter/Tele Cab	1-1/4", RMC/PVC	3-#6 AWG, 1-#8g	THWN-2,THHN	generic		Blk,Red,Wht,Grn	0.256,0.216	0.15,0.04	0.19
										NOTE 2	1.526
										40% Fill	0.610
										Actual Fill %	0.120

NOTE 5: CAN BE TRANSITIONED TO PVC SCHEDULE 40 AFTER 6" ABOVE GROUND

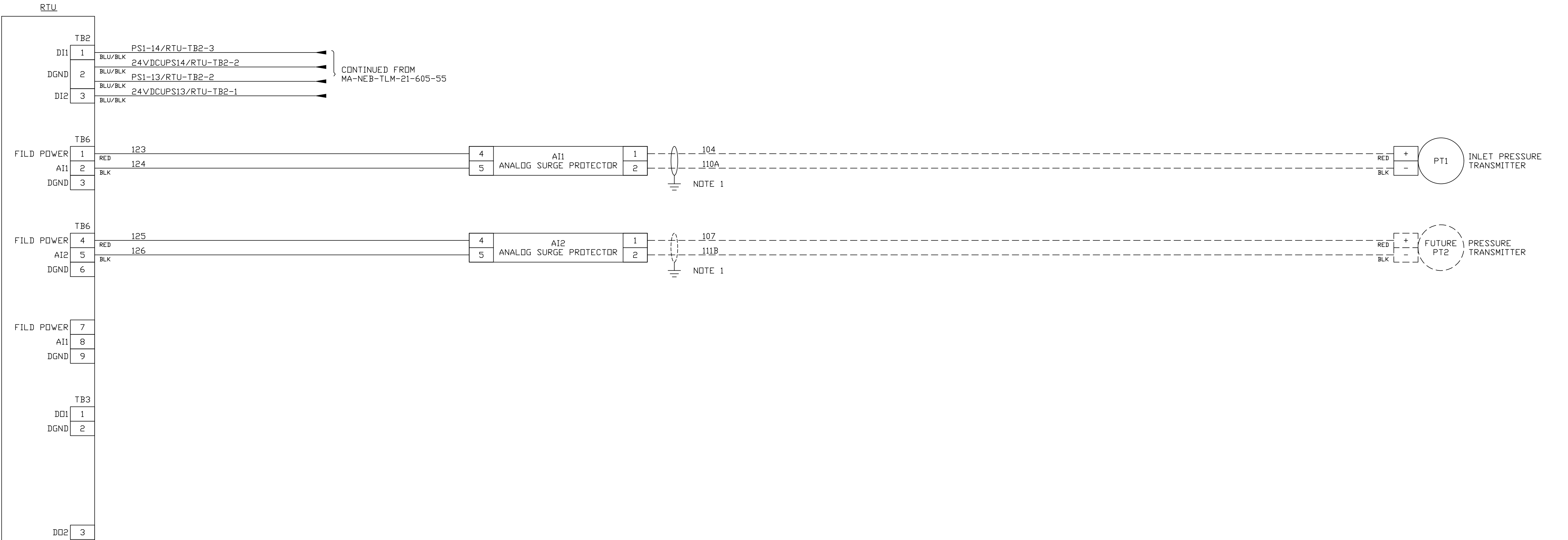


2	REVISED CONDUIT FILL CALCULATION TABLE	02/08/22	WBH/TAN
1	REVISED TEXT	08/05/21	WBH/TAN
0	AS-BUILT	04/09/21	DBF/MPL/EJP
No.	Description	Date	Dw/Ck/Ap
Revision/Status			
EVERSOURCE ENERGY			
AS-BUILT END POINT TELEMETER CABINET			
FOR POWER DROP, CELLULAR COMMUNICATION			
GROUNDING DETAIL & CONDUIT SCHEDULE			
SCALE: NTS		SHEET 12 OF 14	
Drawn by / Date DBF / 04/09/21	Checked by / Date MPL / 04/09/21	Sheet Number	Rev. No.
Approved by / Date EJP / 04/09/21	Filed: D-190-92.04.dwg	MA-NEB-TLM-21-605-57	2

FIELD VERIFY
DIMENSIONS
PRIOR TO PIPE
FABRICATION

INTERNAL CABINET I/O WIRING

FIELD



NOTE:
1. SHIELD SHALL BE GROUNDED ONLY AT THIS POINT.

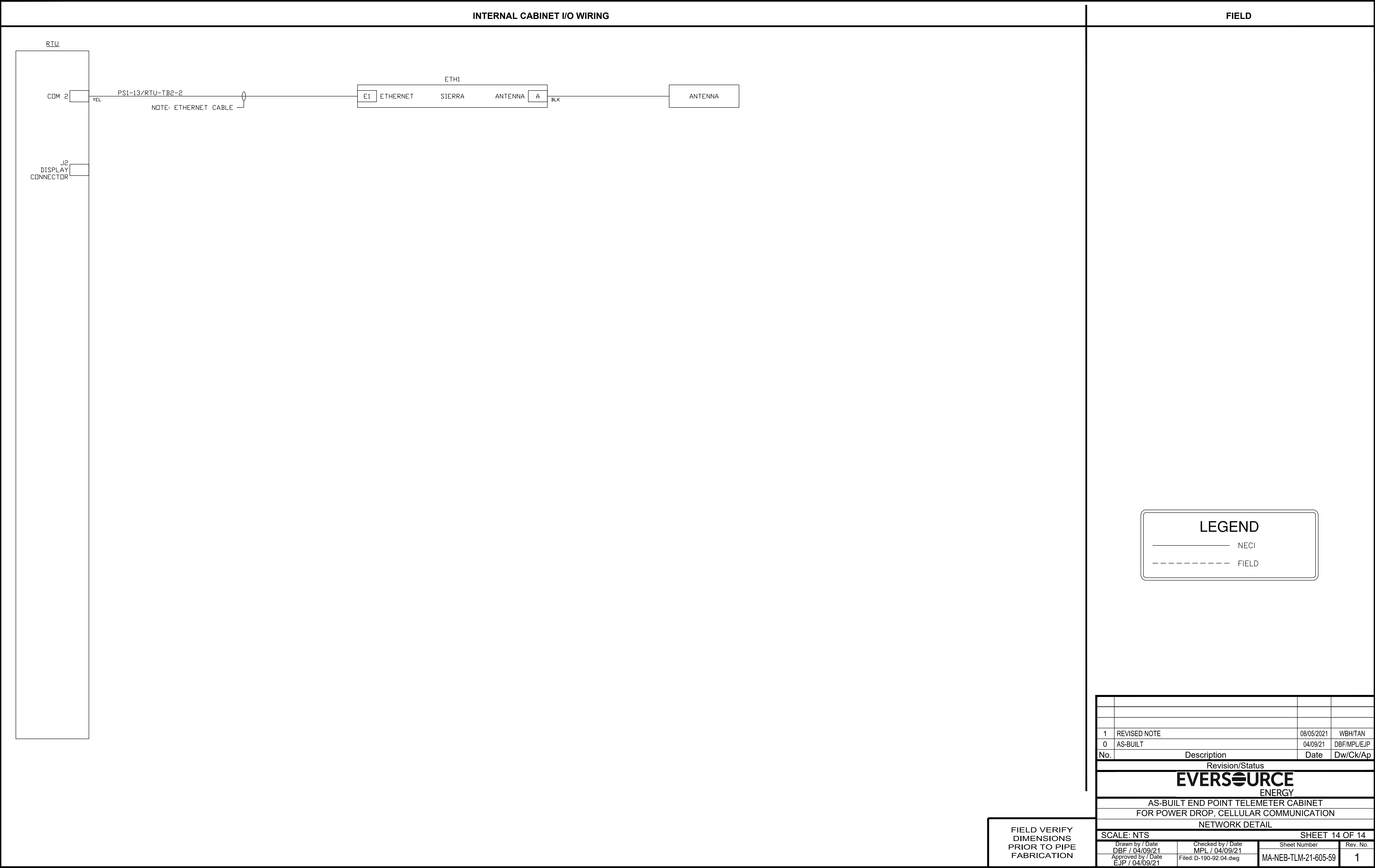
LEGEND

NEC

FIELD

2	REVISED DRAWING NUMBER AND RTU LOOP DETAIL	02/08/22	WBH/TAN
1	ADDED ANALOG SURGE PROTECTORS	08/05/21	WBH/TAN
0	AS-BUILT	04/09/21	DBF/MPL/EJP
No.	Description	Date	Dw/Ck/Ap
Revision/Status			
EVERSOURCE ENERGY			
AS-BUILT END POINT TELEMETER CABINET			
FOR POWER DROP, CELLULAR COMMUNICATION			
RTU1 LOOP DETAIL			
SCALE: NTS		SHEET 13 OF 14	
Drawn by / Date DBF / 04/09/21		Checked by / Date MPL / 04/09/21	
Approved by / Date EJP / 04/09/21		Sheet Number MA-NEB-TLM-21-605-58	Rev. No. 2

FIELD VERIFY
DIMENSIONS
PRIOR TO PIPE
FABRICATION



G:\JOBS\22\02200659\PROJECTS\ASSIGNMENTS\NEW BEDFORD-DURFEE STD.WG1