



Specification Sheet for MODEL ACTB-20-695

Single Pole and Base

Available in 8' and 10' lengths

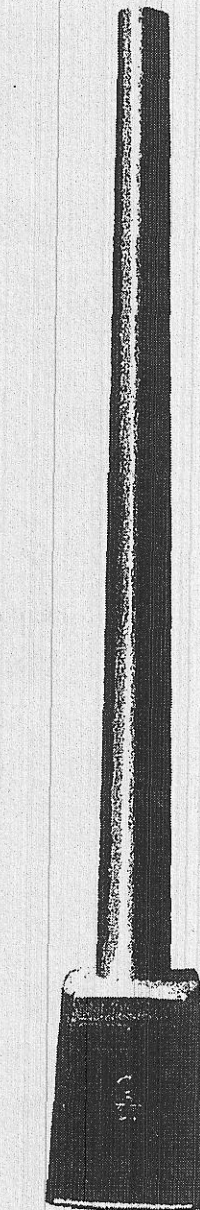
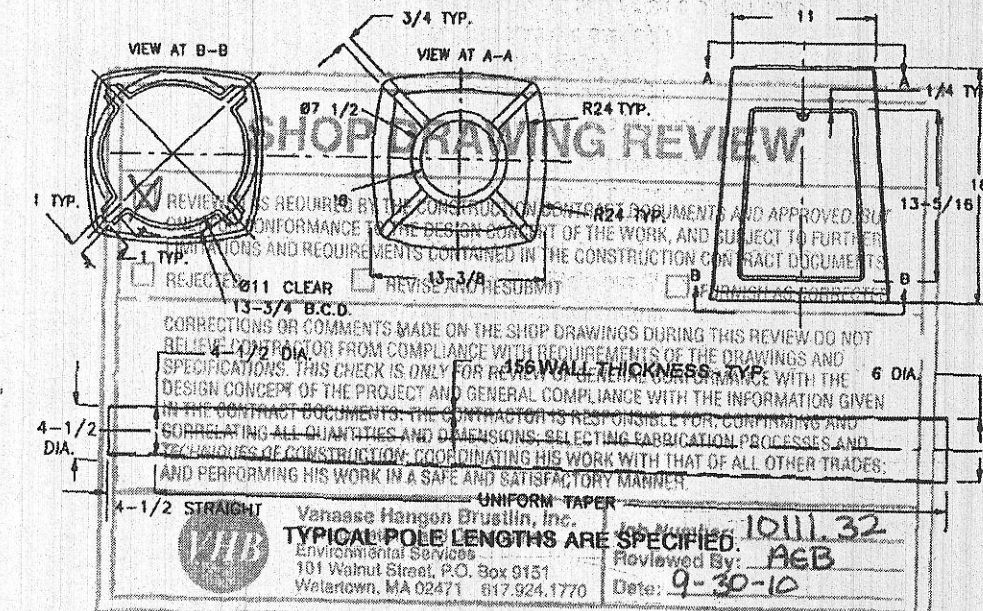
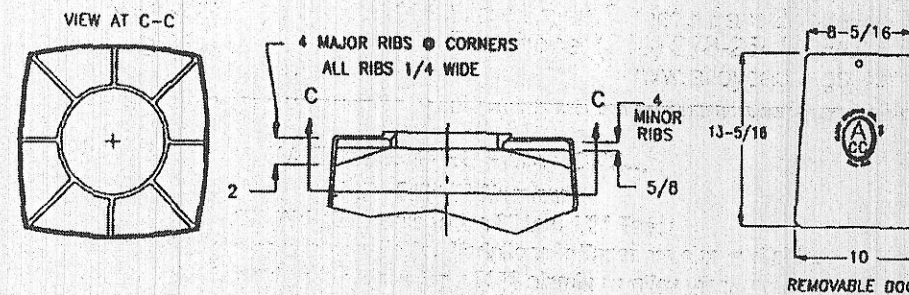
From: **ALLOY CASTINGS CO., INC.**
Quality Aluminum Castings Since 1948

151 West Union Street • East Bridgewater, MA 02333-0473
Telephone: (508) 378-2541 • FAX: (508) 378-1240
www.alloycastings.com

MATERIAL SPECIFICATIONS...

POLE: 6063-T6 Aluminum
156 Wall Thickness with a 6" to 4 1/2" Taper
Other wall thicknesses are available. Variations in Taper are also available.
M.I.G. welding is done using a 5356 aluminum alloy wire.
Continuously welded to the inside and outside of the base.
Vibration dampers are available.
Satin Brush Finish.
All Pole Lengths are available.
3', 4', 4", 8', 10' and 12' are in stock.

BASE: 356 Cast Aluminum. Base contains an internal grounding stud for the purpose of attaching a ground connector.
Removable 8 5/16" x 13 5/16" x 10" door.
Vandal Resistant 304 Stainless Steel Screw is used to lock door.
All Hardware is 304 Stainless Steel.
One Coat Bituminous Paint on bottom of base.
Anchor Bolts are available 3/4" x 25" long 4" thread and 4" hook.
Galvanized Steel with Nuts, lock Washers and Flat Washers. 4 each required.



Model ACTB-20-695
Single Pole & Base