

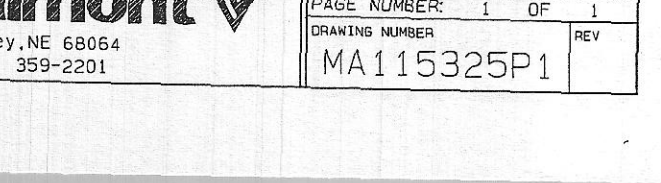
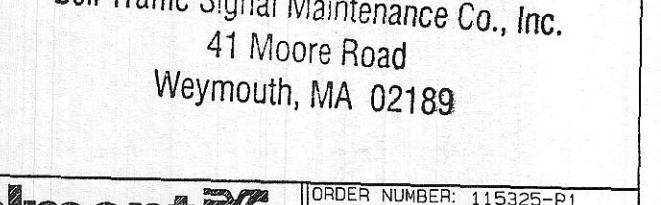
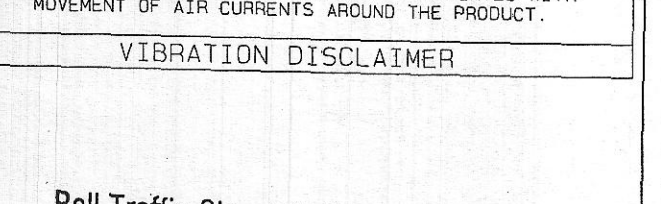
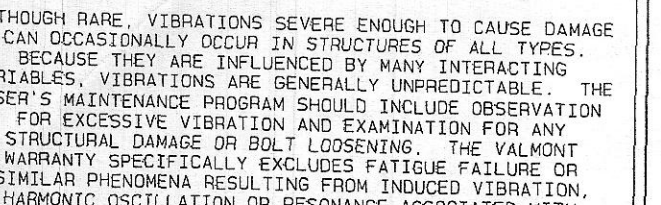
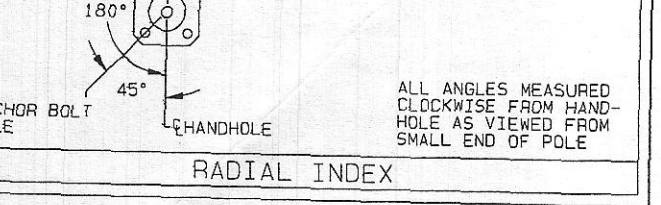
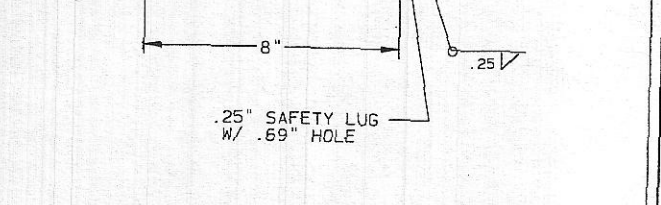
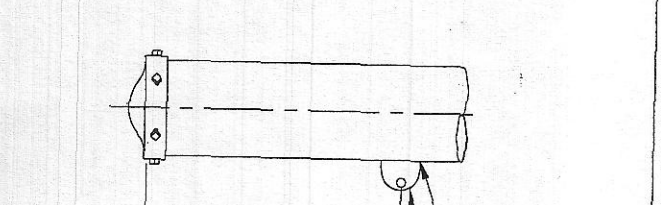
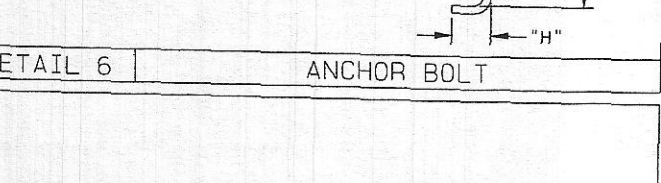
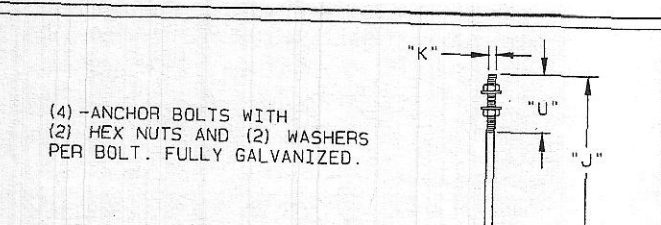
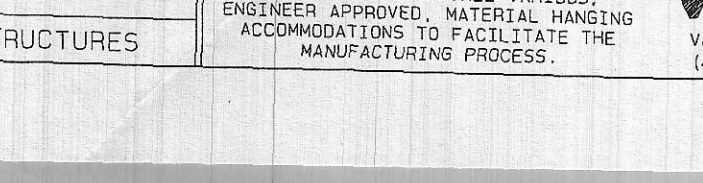
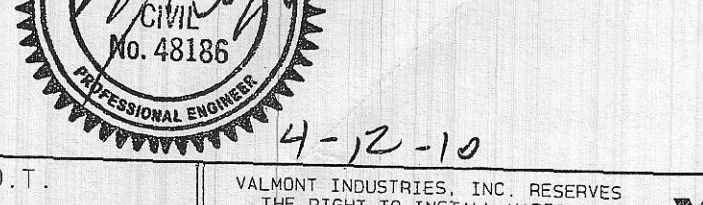
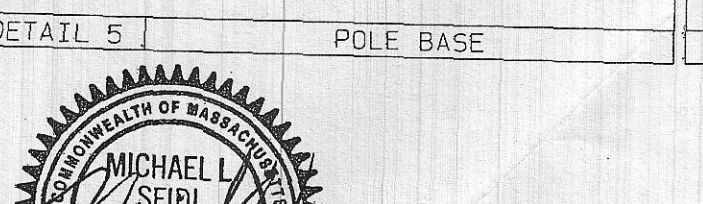
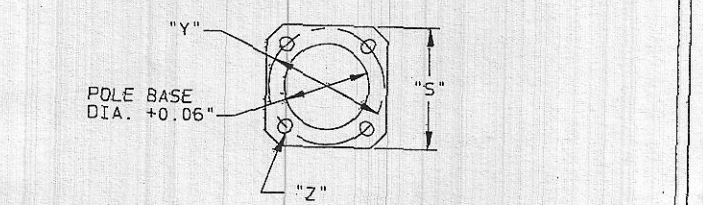
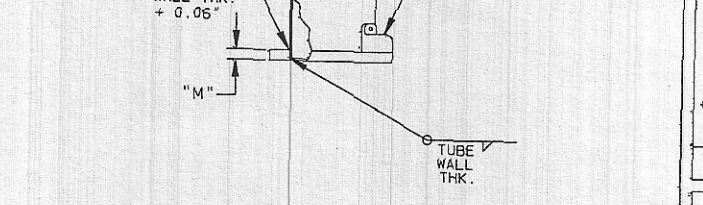
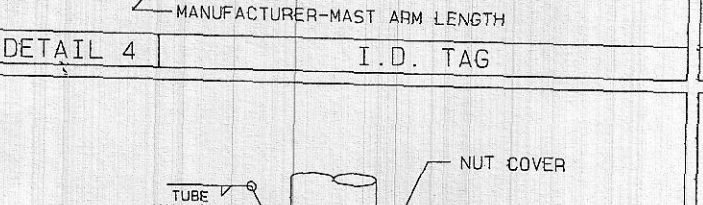
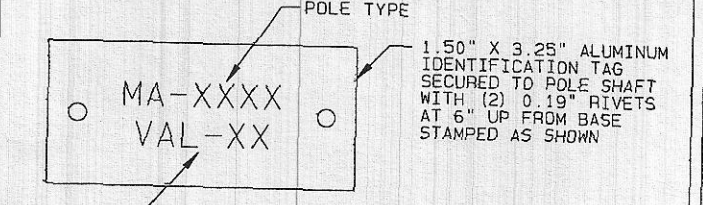
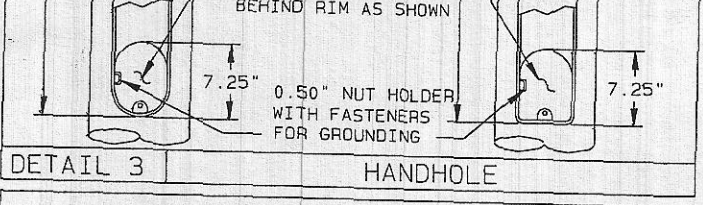
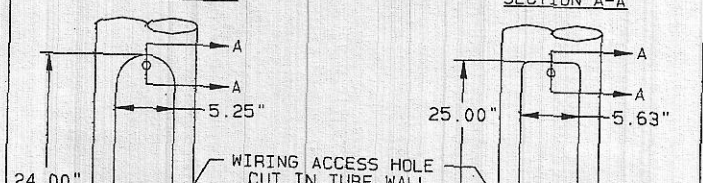
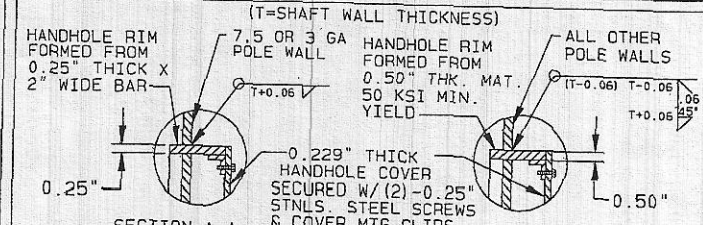
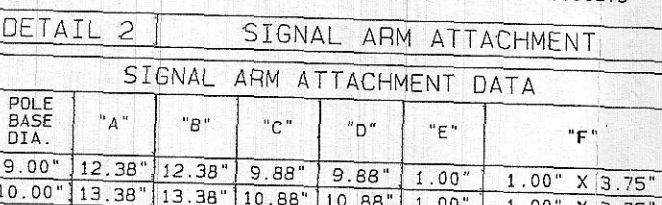
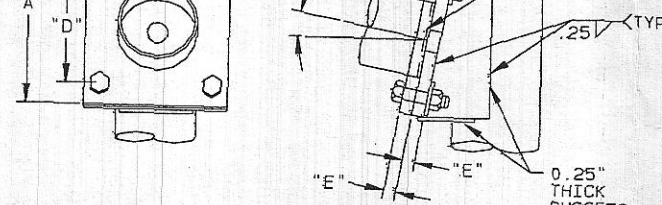
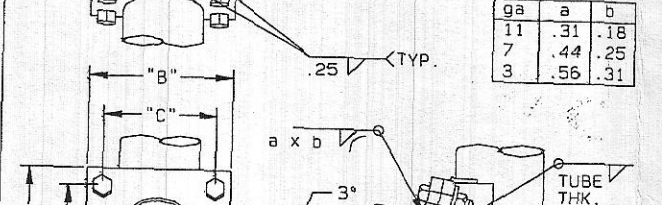
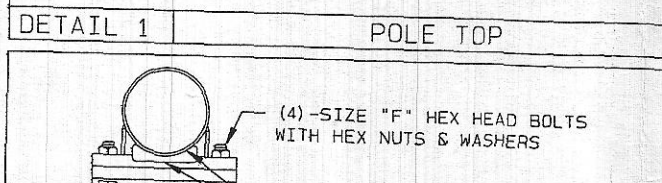
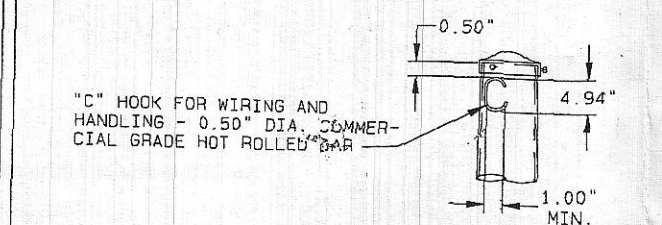
FINISH NOTE:
 BASE COAT: HOT DIP GALVANIZE TO ASTM: A123.
 FINISH COAT: TGIC OR URETHANE POLYESTER POWDER, BLACK IN COLOR, VALMONT SPEC. F283A.

MATERIAL DATA

COMPONENT	ASTM DESIGNATION	MIN. YIELD (KSI)	COMPONENT	ASTM DESIGNATION	MIN. YIELD (KSI)
TAPERED TUBES	A595 GR. A OR A572	55	ARM ATTACHMENT PLATES	A36	36
POLE BASE PLATE	A36	36	ARM CONNECTION BOLTS	A325**	
GALVANIZING-ACCESSORIES	A153		ANCHOR BOLTS	F1554 GR. 55	55
GALVANIZING-ASSEMBLIES	A123				

**LUBRICATE IN FIELD IF NECESSARY

POLE AND SIGNAL ARM DATA																			
ITEM	QTY.	POLE TUBE				POLE BASE					ANCHOR BOLT			ANCHOR BOLT PROJECTION ABOVE CONCRETE		SIGNAL ARM TUBE			
		BASE DIA. (IN)	TOP DIA. (IN)	LENGTH (FT)	GAUGE OR THK. (IN)	SQUARE "S" (IN)	BOLT CIRCLE "V" (IN)	THK. "W" (IN)	HOLE / SLOT "Z" (IN)	DIA. "K" (IN)	LENGTH "J" (IN)	HOOK "H" (IN)	THREAD LENGTH "U" (IN)			FIXED END DIA. (IN)	FREE END DIA. (IN)	GAUGE OR THICK (IN)	SPAN (FT)
														MIN.	MAX.				
1	2	9.00	6.06	21.00	7	16.00	16.00	1.25	1.50	1.25	42.00	6.00	6.00	4.75	5.25	6.00	3.20	7	20.00
2	2	10.00	7.06	21.00	7	16.00	16.00	1.25	1.50	1.25	42.00	6.00	6.00	4.75	5.25	7.00	3.50	7	25.00
3	2	12.50	9.56	21.00	5	16.00	16.00	1.25	1.75	1.50	54.00	6.00	8.00	5.25	5.75	10.00	5.10	7	35.00
4	1	9.00	6.06	21.00	7	16.00	16.00	1.25	1.50	1.25	42.00	6.00	6.00	4.75	5.25	6.00	3.90	7	15.00
5	1	12.50	9.56	21.00	5	16.00	16.00	1.25	1.75	1.50	54.00	6.00	8.00	5.25	5.75	9.00	4.80	7	30.00
										</									



4-12-10

SOLD TO: HIGHWAY TECH
 SHIP TO: BELL TRAFFIC SIGNAL MAINTENANCE
 P.O. #: 5597
 AGENT: HIGHWAY TECH

JOB: MASSACHUSETTS D.O.T.
 NEW BEDFORD
 TITLE: TRAFFIC SIGNAL STRUCTURES

VALMONT INDUSTRIES, INC. RESERVES THE RIGHT TO INSTALL VARIOUS ENGINEER APPROVED, MATERIAL HANGING ACCOMMODATIONS TO FACILITATE THE MANUFACTURING PROCESS.

Valley, NE 68064
 (402) 359-2201

ORDER NUMBER: 115325-P1
 PAGE NUMBER: 1 OF 1
 DRAWING NUMBER: MA115325P1

REV: JTF 04/07/10
 JTF 04/07/10
 DESCRIPTION: TRAFFIC SIGNAL STRUCTURES



Bell Traffic Signal Maintenance Co., Inc.
 41 Moore Road
 Weymouth, MA 02189