

Single Pole and Base

From: ALLOY CASTINGS CO., INC.
Quality Aluminum Castings Since 1948

151 West Union Street • East Bridgewater, MA 02333-0473
Telephone: (508) 378-2541 • FAX: (508) 378-1240
www.alloycastings.com



POLE: 6063-T6 Aluminum

.156 Wall Thickness with a 6" to 4 1/2" Taper
Other wall thicknesses are available. Variations in Taper are also available.
M.I.G. welding is done using a 5356 aluminum alloy wire.
Continuously welded to the inside and outside of the base.
Vibration dampers are available.
Satin Brush Finish.
All Pole Lengths are available.
3/4", 4", 4", 8", 10" and 12" are in stock.

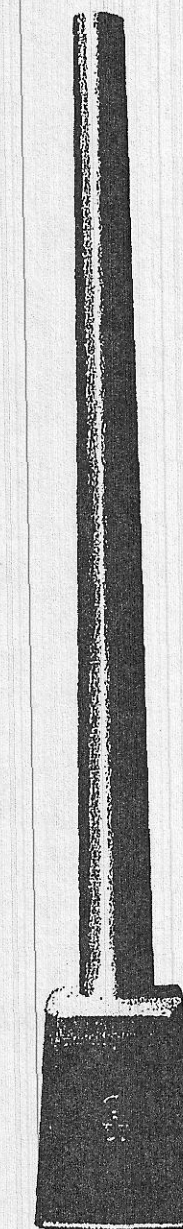
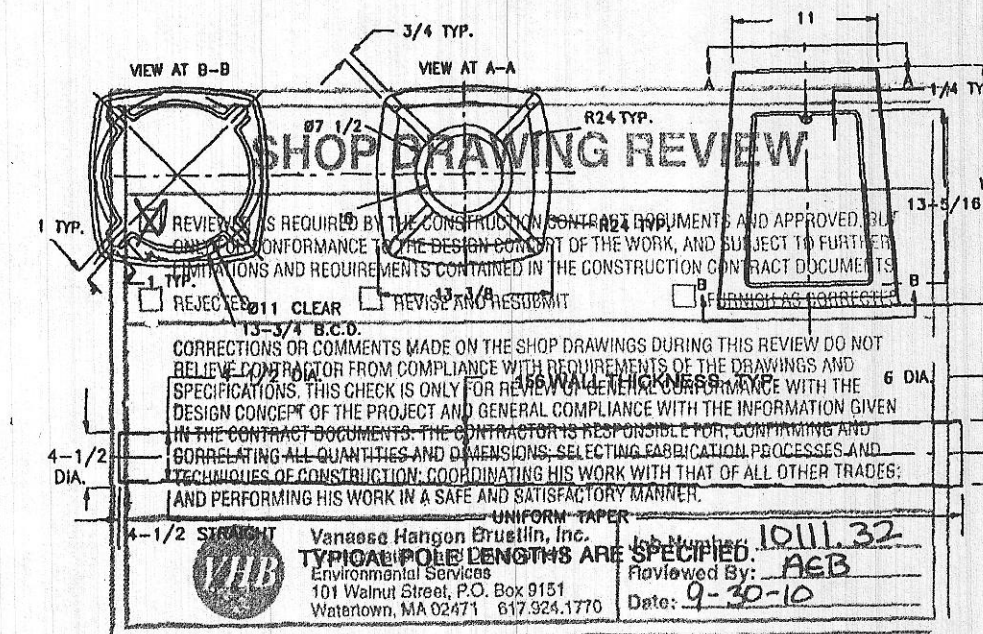
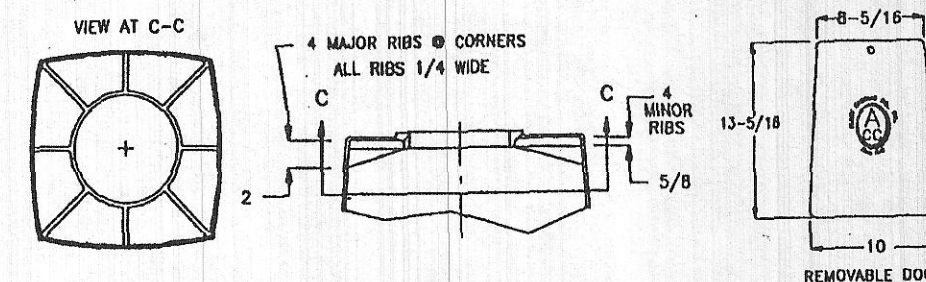
BASE: 356 Cast Aluminum. Base contains an internal grounding stud for the purpose of attaching a ground connector.
Removable 8 5/16" x 13 5/16" x 10" door.

Vandal Resistant 304 Stainless Steel Screw is used to lock door.

All Hardware is 304 Stainless Steel

One Coat Bituminous Paint on bottom of base

Anchor Bolts are available 3/4" x 25" long 4" thread and 4" hook.
Galvanized Steel with Nuts, lock Washers and Flat Washers. 4 each required



Model ACTB-20-695
Single Pole & Base