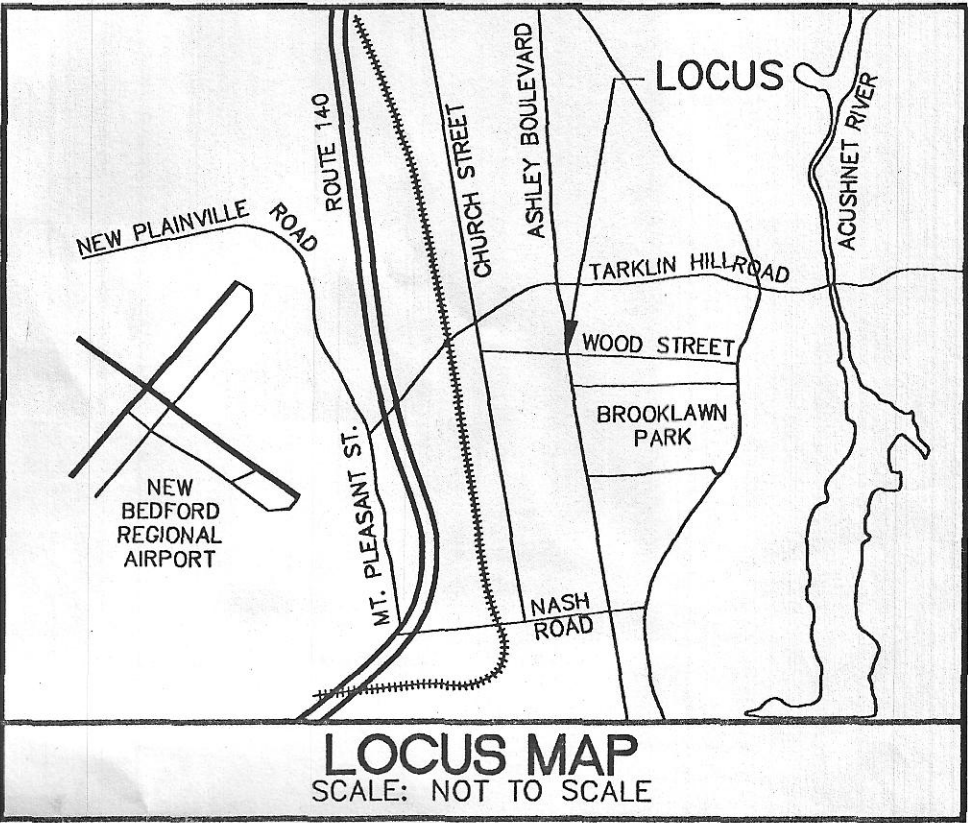


NEW BEDFORD
ASHLEY BLVD. AND WOOD STREET
TRAFFIC SIGNAL PLAN



SEQUENCE AND TIMING									
STREET	DIRECTION	FACES	PHASE 1			PHASE 2			EMERGENCY
			1	2	3	4	5	6	
ASHLEY BOULEVARD	S.B.	A,B	G	Y	R	R	R	R	RY
ASHLEY BOULEVARD	N.B.	C,D	G	Y	R	R	R	R	FY
WOOD STREET	W.B.	E,F	R	R	R	R	R	R	FR
WOOD STREET	E.B.	G,H	R	R	R	R	R	R	FR
PEDESTRIAN	ALL	ALL	DW	DW	DW	W	FDW	DW	DUT

TIMING IN SECONDS									
VEHICLE EXTENSION	4	3	2	1	0	0	0	0	0
MINIMUM	9	7	8	1	8	20			
MAXIMUM I	30				20				
MAXIMUM II	30				20				
YELLOW AND RED CLEARANCE	4	1							
MEMORY	ON				OFF				
DETECTION	PRES				PRES				
RECALL	ON				OFF				

DETECTOR NUMBER	# OF SECTIONS SIZE	# OF TURNS	OPERATIONS	CALL DELAY	CALL PHASE	LOOP CONNECTION
1	4 - 6' x 6'	4	PRESENCE	NO	1	SERIES
2	4 - 6' x 6'	4	PRESENCE	NO	1	SERIES
3	2-6' x 12'	3	PRESENCE	NO	3	SERIES
3	2-6' x 12'	3	PRESENCE	NO	3	SERIES

SIGNAL FACES

R

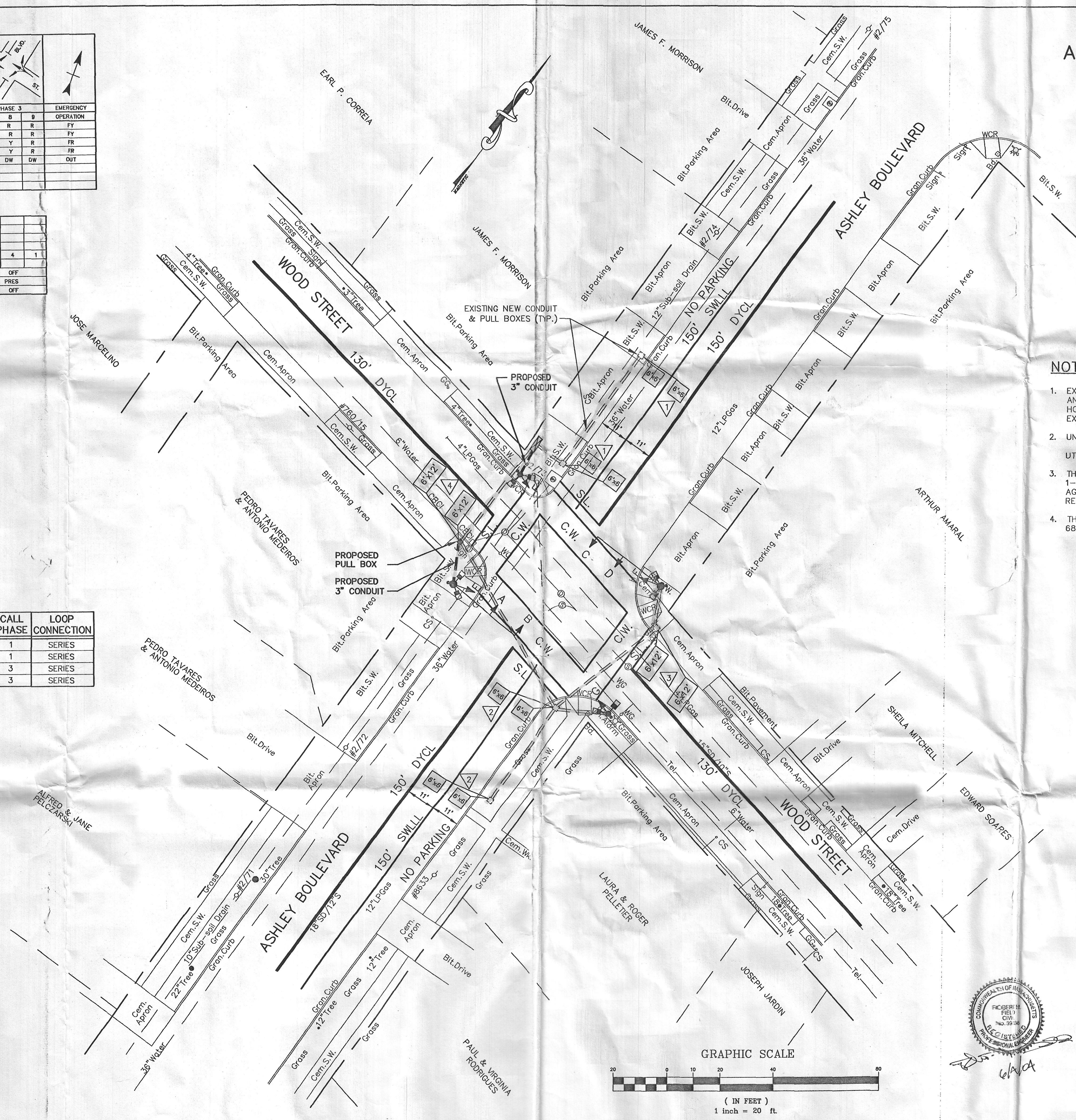
Y

G

ALL LENSES TO BE 12"

ALL SIGNALS SHALL BE LED TYPE

ALL FACES INCANDESCENT



NOTES

- EXISTING CONDITIONS WERE OBTAINED FROM AVAILABLE RECORDS AND FIELD SURVEYS BY THE ENGINEERING DEPARTMENT ON FEB.15, 2002. HOWEVER THIS IS IN NO WAY INTENDED TO IMPLY THAT THESE ARE THE EXACT LOCATIONS OF UTILITIES, OR THAT OTHER UTILITIES DO NOT EXIST.
- UNDERGROUND UTILITIES ARE PLOTTED FROM DATA FURNISHED BY UTILITY UTILITIES SHALL BE DETERMINED BY THE CONTRACTOR IN THE FIELD.
- THE CONTRACTOR IS REQUIRED BY LAW TO NOTIFY "DIG SAFE", "ONE CALL" 1-800-322-4844 AND THE APPROPRIATE UTILITY COMPANY OR GOVERNMENT AGENCIES IN WRITING PRIOR TO ANY EXCAVATION WORK. "DIG SAFE" REQUIRES 72 HOURS NOTICE BY LAW, EXCLUSIVE OF WEEKEND AND HOLIDAYS.
- THIS SIGNAL DESIGN WAS PREPARED IN ACCORDANCE WITH CHAPTER 689 ACTS OF 1986.

LEGEND

- PROP. CONDUIT
- PROP. SIGNAL POST
- PROP. MAST ARM
- PROP. TRAFFIC CONTROLLER
- PROP. VEHICULAR SIGNAL HEAD
- PROP. 12" X 12" PULL-BOX (SD2.031)
- PROP. LOOP DETECTOR
- EXIST. NEW 12" X 12" PULL-BOX
- EXIST. NEW 3" CONDUIT

PAVEMENT MARKING KEY

- S.L. STOP LINE (12")
- C.W. CROSS WALK (12")
- D.Y.C.L. DOUBLE YELLOW CENTER LINE (4")
- S.W.L.L. SOLID WHITE LANE LINE (4")

MAJOR ITEMS REQUIRED

QTY.	ITEM
1	CONTROLLER TYPE 8DW W/CABINET, FOUNDATION & CONC. PAD
2	30' MAST ARM TYPE II & FOUNDATION
2	SIGNAL POST - 10 FT. & FOUNDATION
8	ONE-WAY SIGNAL HOUSING - 3 LENS (12")
8	PEDESTRIAN SIGNAL HEAD-TYPE B (INCANDESCENT) INT. SYM.
4	PEDESTRIAN PUSH BUTTON
4	2 CHANNEL DETECTOR AMPLIFIER UNITS
8	6'X6' WIRE LOOP DETECTORS
4	6'X12' WIRE LOOP DETECTORS
1	SERVICE CONNECTION
Necessary Duct, Sweeps, Cable, Labor, Miscellaneous Materials And Equipment to Complete the Installation.	