

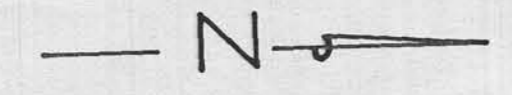
IN EFFECT:
CORRECTED

CODE
CABLES

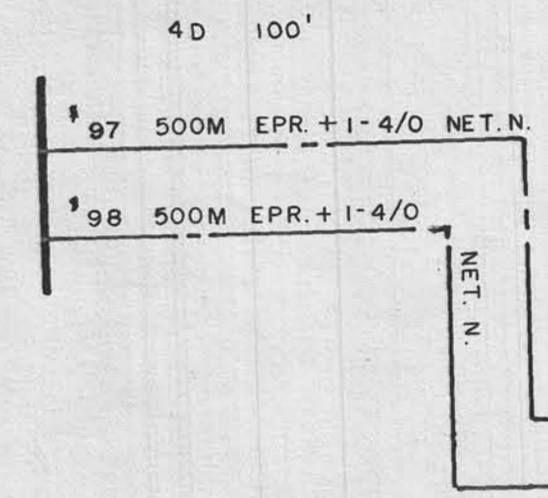
SECONDARY ———
2200-4400v ———
13,200v ———
STREET LIGHTS ———

POTHEAD —○—

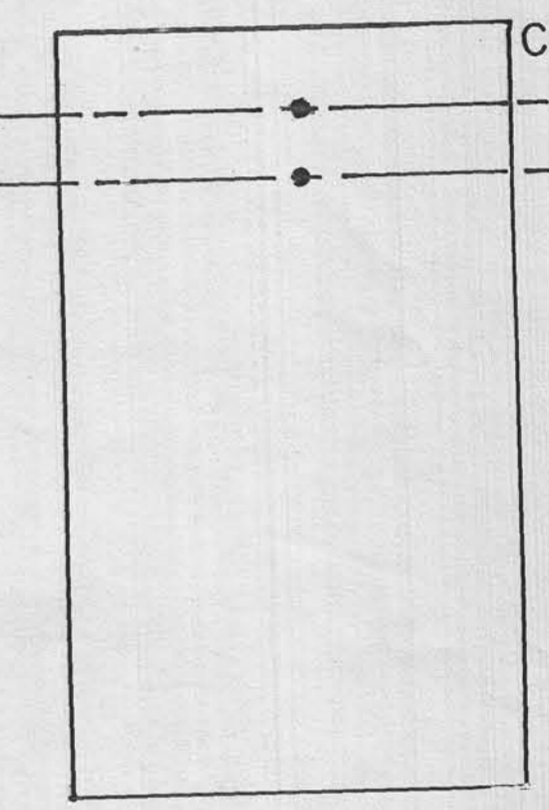
OIL SWITCH —□—
OIL CUTOUT —■—



NB.W.W TREATMENT PLANT
SWITCH GEAR
8000/9005 SS



RODNEY FRENCH BLVD.



CUST. M.H. 8000/9005

152A