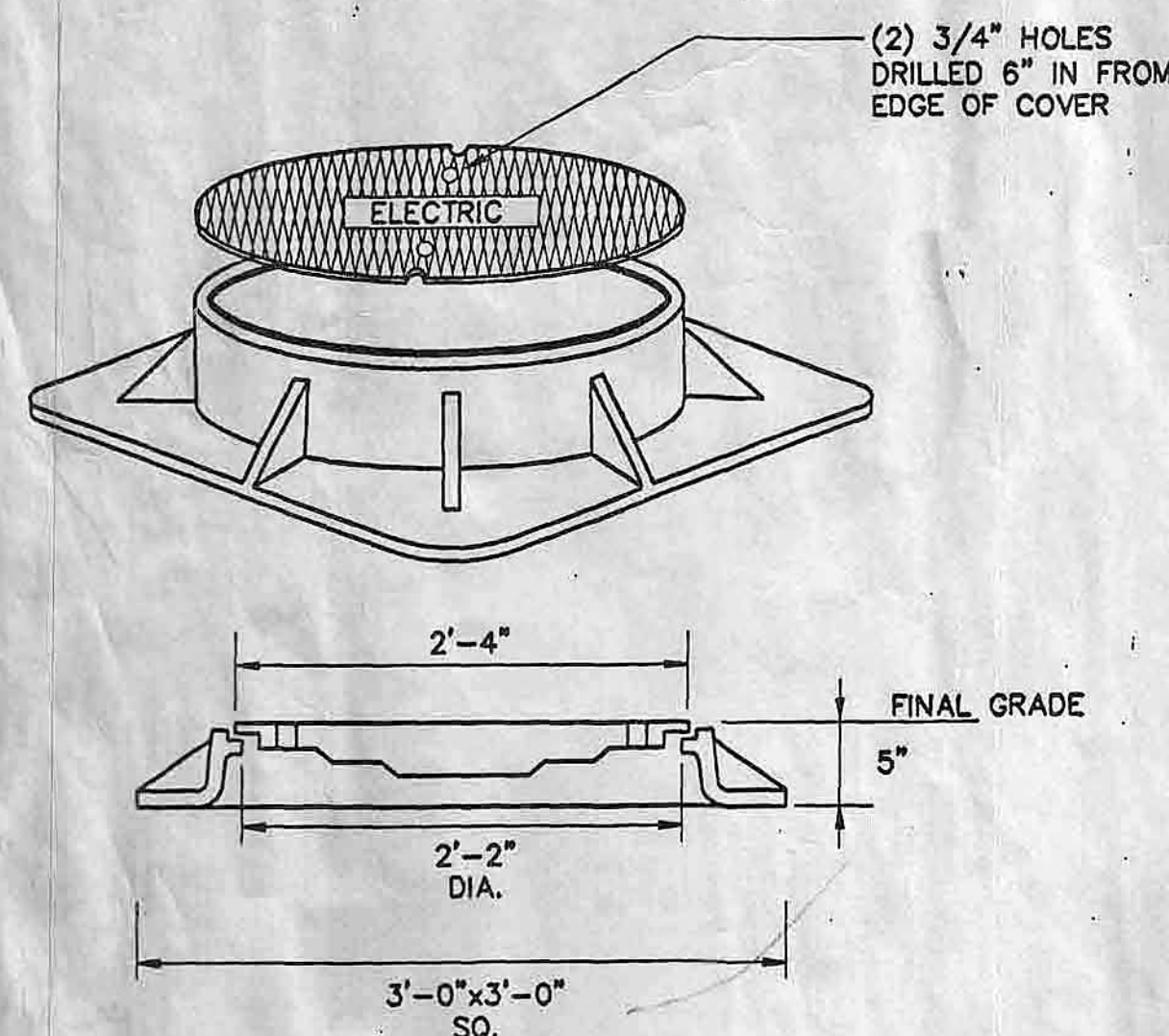


#### NOTES:

1. INSTALL GALVANIZED PULLING EYES, ONE ON EACH WALL (4) 3/4" EYES.
2. CONCRETE TO BE 5000 PSI HIGH EARLY STRENGTH.
3. CONDUIT OPENING TO HAVE 4" BELL ENDS FLUSH WITH INSIDE WALL.
4. DO NOT BURY MORE THAN 18" BELOW FINAL GRADE.
5. TO BE INSTALLED ON A 12" BED OF CRUSHED STONE.
6. MANUFACTURED BY FRUEN CAT # FE-3A, LINHARES 6-4 OR EQUIVALENT, AS APPROVED BY UTILITY CO.
7. TRENCH AND BACKFILL IN ACCORDANCE WITH THE PRECAST POLE BASE DETAIL.

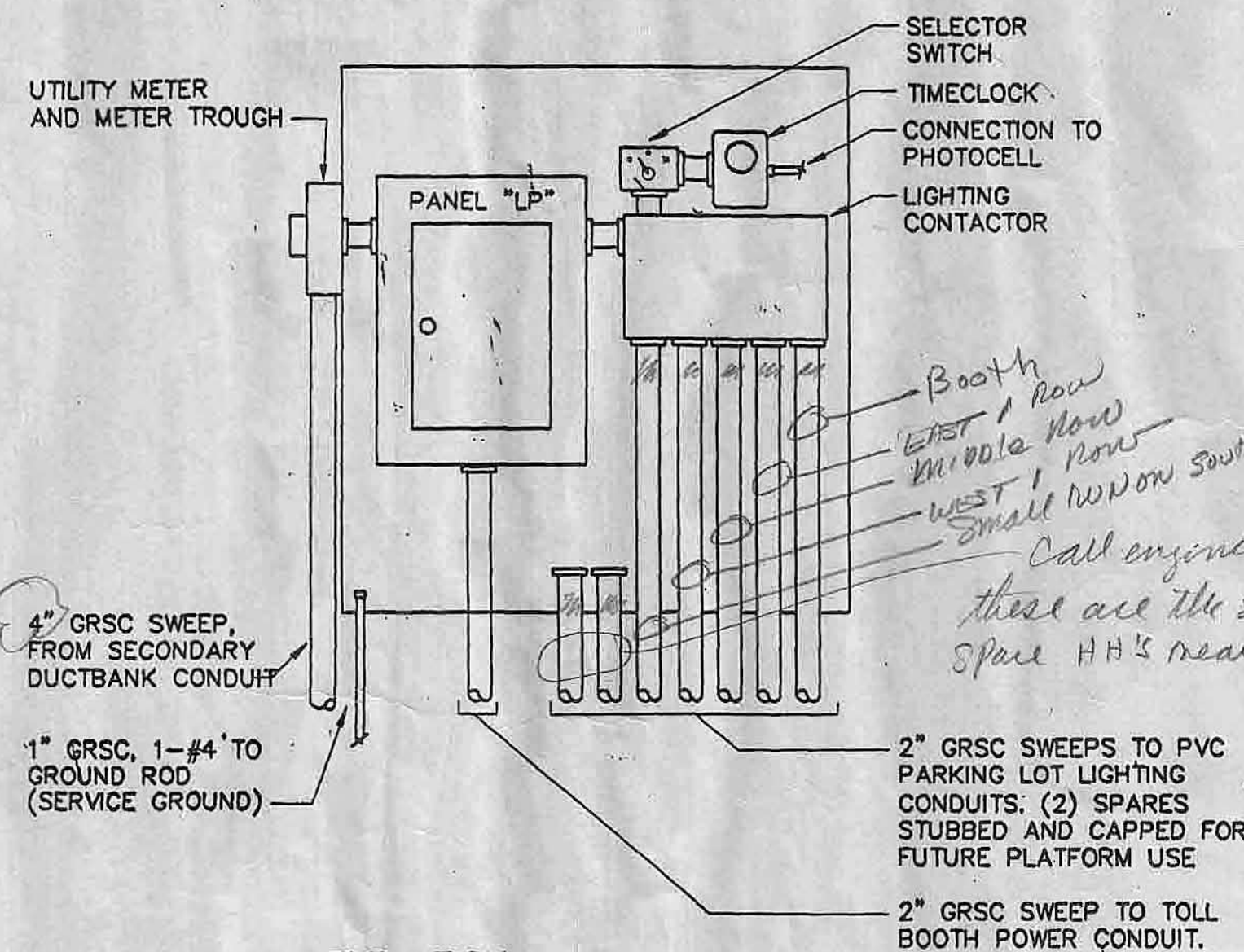
#### MANHOLE DETAIL

SCALE: N.T.S.



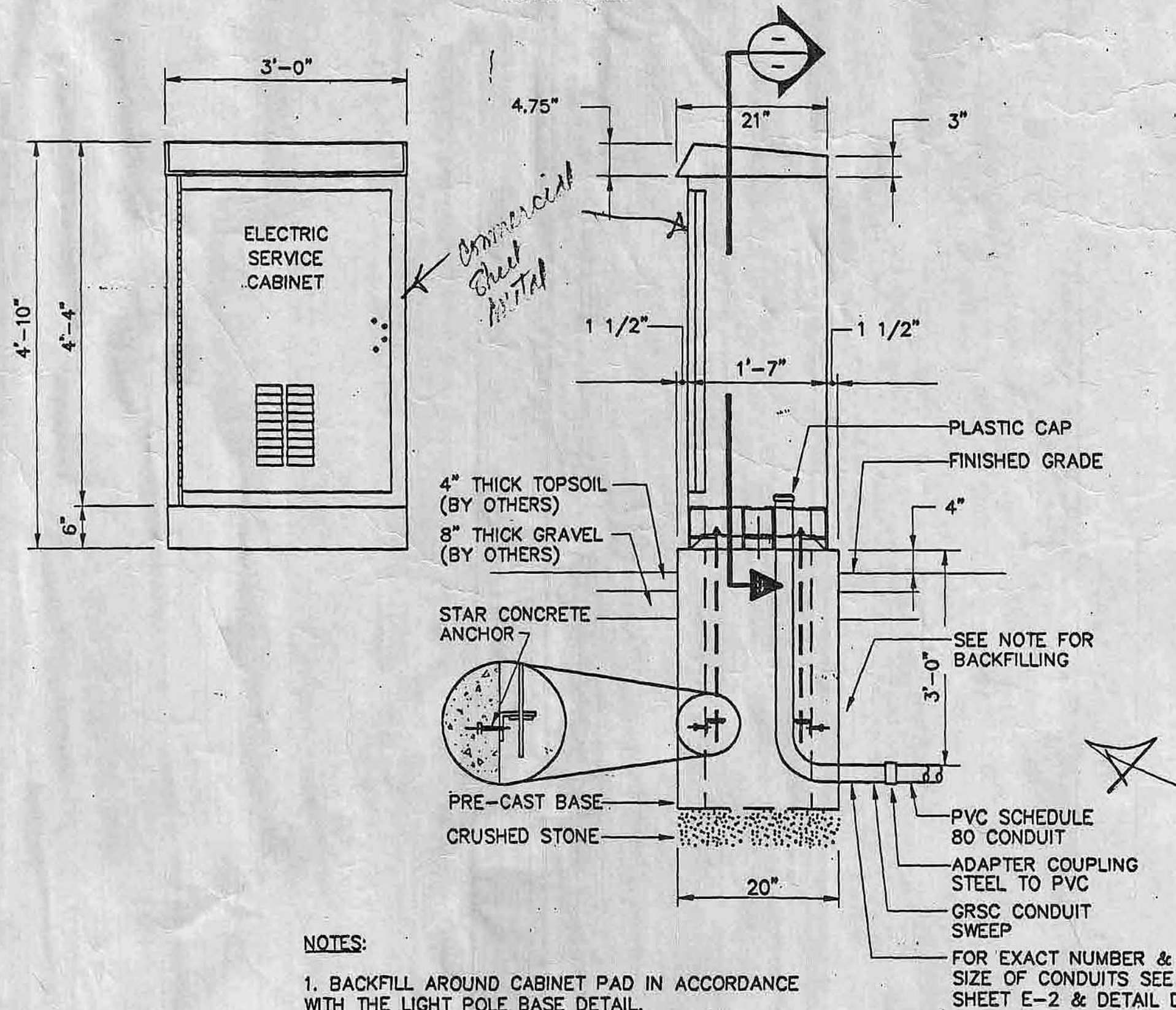
#### NOTES:

1. COVER ENGRAVING SHALL BE COORDINATED WITH UTILITY CO.
2. FRAME & COVER TO SUPPORT H20 WHEEL LOAD.
3. NO VAULT MANHOLE SHALL BE BURIED DEEPER THAN 18" BELOW FINISH GRADE.



#### ELEVATION

SCALE: N.T.S.

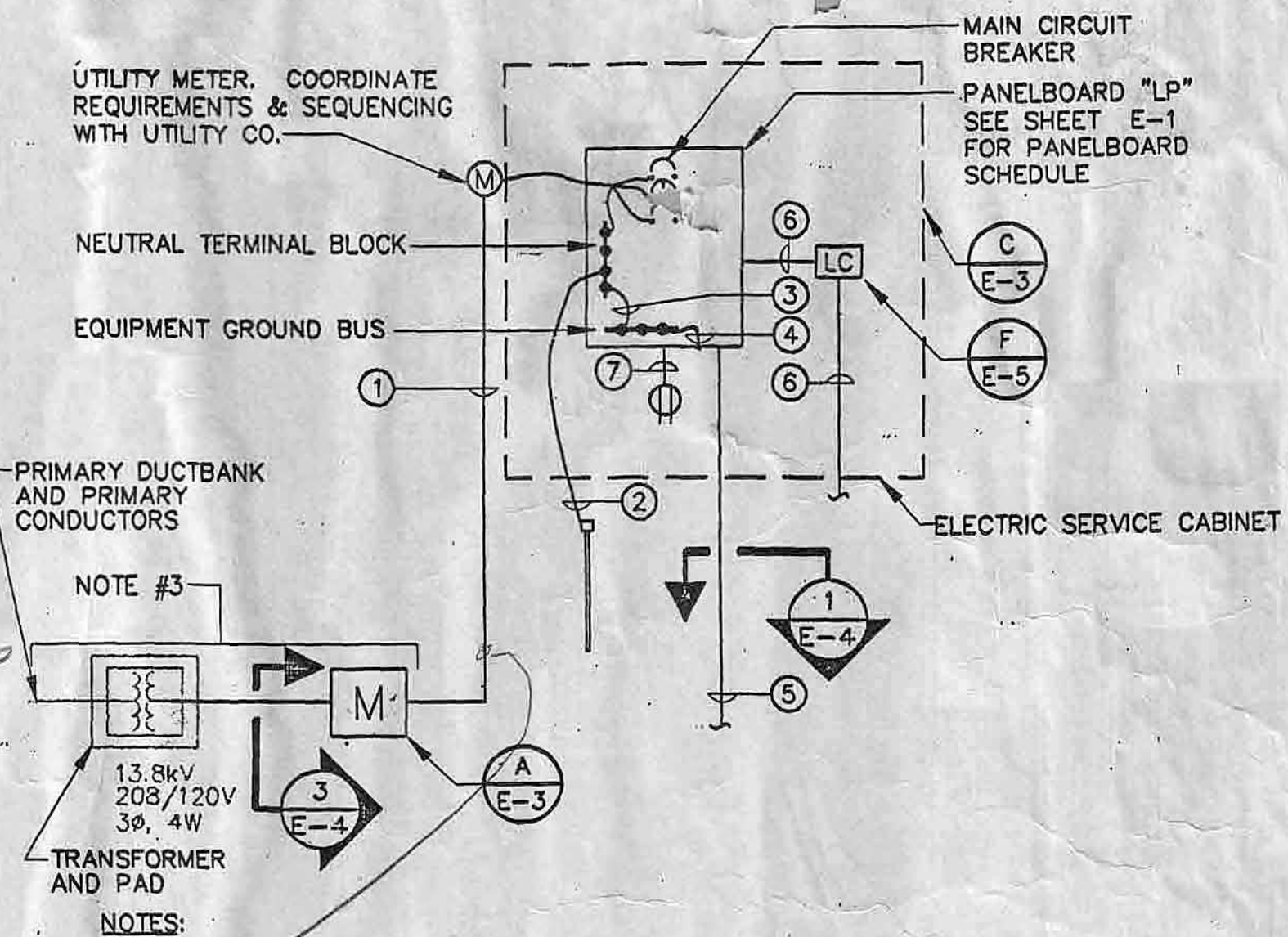


#### NOTES:

1. BACKFILL AROUND CABINET PAD IN ACCORDANCE WITH THE LIGHT POLE BASE DETAIL.

#### PARKING LOT ELECTRIC SERVICE CABINET

SCALE: N.T.S.



#### NOTES:

1. ALL WORK SHOWN SHALL BE PROVIDED BY THE ELECTRICAL CONTRACTOR, UNLESS NOTED OTHERWISE.
2. ALL GROUNDING SHALL BE IN ACCORDANCE WITH NEC ARTICLE 250.
3. PRIMARY DUCTBANK, PRIMARY CONDUCTORS, TRANSFORMER AND TRANSFORMER PAD PROVIDED BY UTILITY CO. SECONDARY DUCT BANK FROM TRANSFORMER TO SECONDARY MANHOLE AND SECONDARY CONDUCTORS PROVIDED BY ELECTRICAL CONTRACTOR. ALL WORK SHALL BE COORDINATED WITH UTILITY CO.

1. ELECTRIC SERVICE, 2-1/2" CONDUIT, 4-#3/0 & 2 1/2" SPARE. SEE SHEET E-4 FOR TRENCH DETAILS.
2. #4 AWG GROUNDING ELECTRODE IN 1" C WITH EXOTHERMIC WELD CONNECTION TO 3/4"x10' COPPER GROUND ROD DRIVEN 2' BELOW GRADE
3. MAIN BONDING JUMPER, 1#4
4. BONDING JUMPER, 1#4
5. FARE COLLECTION BOOTH LOAD CENTER SERVICE, 2" CONDUIT, 4#3+1#8G.
6. FOR TOTAL NUMBER AND FEEDER SIZE, REFER TO LIGHTING FIXTURE ASSEMBLY SCHEDULE SHEET E-1.
7. 1/2" CONDUIT, 2#12+1#12G.

#### ONE-LINE DIAGRAM

SCALE: N.T.S.

Hand wire for Precast Base

Selector Switch  
Time Clock  
Lighting Contactors  
Panel LP  
Main Service Booth  
Service Cabinet

CITY OF NEW BEDFORD, MASSACHUSETTS

RAIL YARD CSO RELOCATION PROJECT, BID NO 946  
CHANGE ORDER NO 2 - WHALES TOOTH PARKING LOT

E3

ELECTRICAL DETAILS - 1